

## Product datasheet for **TP723946**

### PD-L1 (CD274) Human Recombinant Protein

#### Product data:

Product Type:	Recombinant Proteins
Description:	Human PD-L1 Protein, mFc-His tag
Species:	Human
Expression Host:	HEK293
Expression cDNA Clone or AA Sequence:	PD-L1 [Phe19-Arg328]+mFc[Pro99-Lys330]+6×His tag
Tag:	C-Mouse Fc and 6×His
Predicted MW:	52.3 kDa
Purity:	> 95%
Buffer:	Lyophilized from sterile PBS, pH 7.4. Normally 5% - 8% trehalose is added as protectants before lyophilization
Reconstitution Method:	Reconstitute with deionized water
Preparation:	Affinity purification
Applications:	ELISA
Storage:	Store the lyophilized protein at -20°C. After reconstitution, store the protein at -80°C for 12 months. Avoid repeated freezing and thawing.
Stability:	12 months from date of despatch
Locus ID:	29126
UniProt ID:	<a href="#">Q9NZQ7</a>



[View online »](#)

**Summary:**

This gene encodes an immune inhibitory receptor ligand that is expressed by hematopoietic and non-hematopoietic cells, such as T cells and B cells and various types of tumor cells. The encoded protein is a type I transmembrane protein that has immunoglobulin V-like and C-like domains. Interaction of this ligand with its receptor inhibits T-cell activation and cytokine production. During infection or inflammation of normal tissue, this interaction is important for preventing autoimmunity by maintaining homeostasis of the immune response. In tumor microenvironments, this interaction provides an immune escape for tumor cells through cytotoxic T-cell inactivation. Expression of this gene in tumor cells is considered to be prognostic in many types of human malignancies, including colon cancer and renal cell carcinoma. Alternative splicing results in multiple transcript variants.

**Protein Families:**

ELISA

**Protein Pathways:**

Cell adhesion molecules (CAMs)

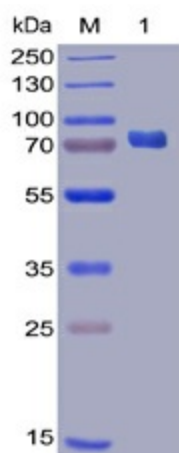
**Product images:**


Figure 1. Human PD-L1 Protein, mFc-His Tag on SDS-PAGE under reducing condition.

**Human PDL1, mFc-His Tagged protein ELISA**

0.2 µg of Human PDL1, mFc-His Tagged protein per well

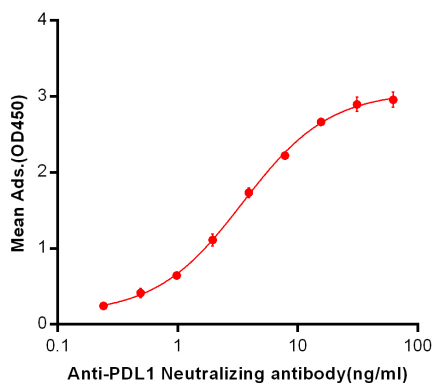


Figure 2. ELISA plate pre-coated by 2 µg/ml (100 µl/well) Human PD-L1, mFc-His tagged protein (TP723946) can bind Anti-PDL1 Neutralizing antibody ([TA355201]) in a linear range of 0.24-7.81 ng/ml.