

Product datasheet for **TP723940**

CTLA4 Human Recombinant Protein

Product data:

Product Type:	Recombinant Proteins
Description:	Human CTLA-4 Protein, mFc-His Tag
Species:	Human
Expression Host:	HEK293
Expression cDNA Clone or AA Sequence:	CTLA-4[Gln36-Ser161]+mFc[Pro99-Lys330]+6×His
Tag:	C-Mouse Fc and 6×His
Predicted MW:	54 kDa
Purity:	> 95%
Buffer:	Lyophilized from sterile PBS, pH 7.4. Normally 5% - 8% trehalose is added as protectants before lyophilization
Reconstitution Method:	Reconstitute with deionized water
Preparation:	Affinity purification
Applications:	ELISA, Flow Cyt
Storage:	Store the lyophilized protein at -20°C. After reconstitution, store the protein at -80°C for 12 months. Avoid repeated freezing and thawing.
Stability:	12 months from date of despatch
Locus ID:	1493
UniProt ID:	P16410
Summary:	This gene is a member of the immunoglobulin superfamily and encodes a protein which transmits an inhibitory signal to T cells. The protein contains a V domain, a transmembrane domain, and a cytoplasmic tail. Alternate transcriptional splice variants, encoding different isoforms, have been characterized. The membrane-bound isoform functions as a homodimer interconnected by a disulfide bond, while the soluble isoform functions as a monomer. Mutations in this gene have been associated with insulin-dependent diabetes mellitus, Graves disease, Hashimoto thyroiditis, celiac disease, systemic lupus erythematosus, thyroid-associated orbitopathy, and other autoimmune diseases.



[View online »](#)

Product images:

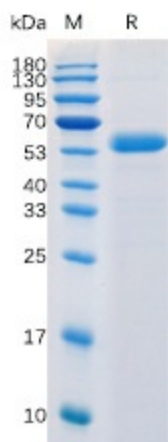


Figure 1. Human CTLA-4 Protein, mFc-His Tag on SDS-PAGE under reducing condition.

Human CTLA4, mFc-His Tagged protein ELISA

0.2 µg of Human B7-1, hFc Tagged protein per well

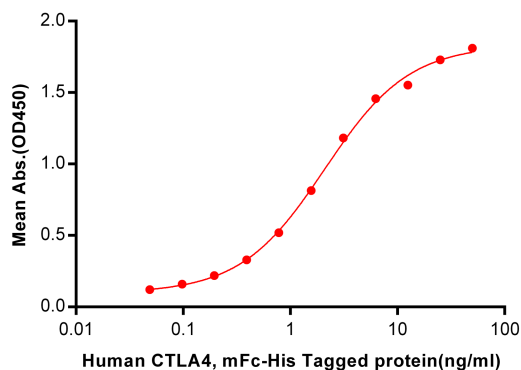


Figure 2. ELISA plate pre-coated by 2 µg/ml (100 µl/well) Human B7-1, hFc tagged protein ([TP724008]) can bind Human CTLA4, mFc-His tagged protein (TP723940) in a linear range of 0.048-2.094 ng/ml.

Human CTLA4, mFc-His Tagged protein ELISA

0.2 µg of Human B7-2, hFc Tagged protein per well

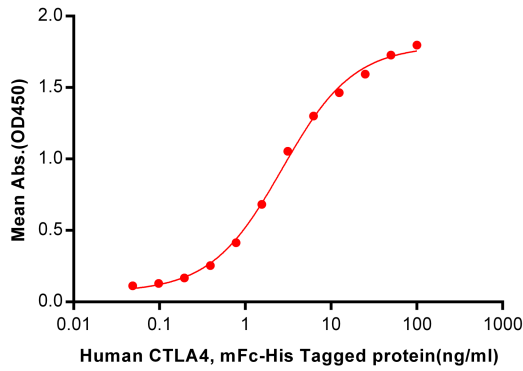


Figure 3. ELISA plate pre-coated by 2 µg/ml (100 µl/well) Human B7-2, hFc tagged protein (TP724009) can bind Human CTLA4, mFc-His tagged protein (TP723940) in a linear range of 0.048-2.694 ng/ml.

Human CTLA-4, mFc-His Tagged protein ELISA

0.2 µg of CTLA-4, mFc-His Tagged protein per well

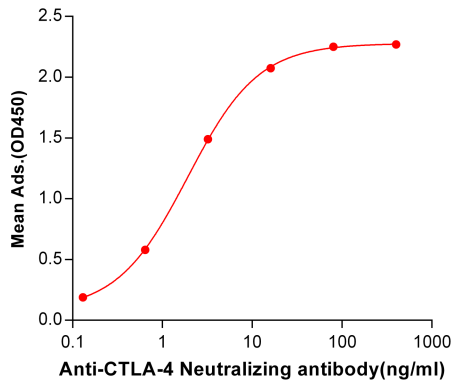


Figure 4. ELISA plate pre-coated by 2 µg/ml (100 µl/well) Human CTLA-4, mFc-His tagged protein (TP723940) can bind Anti-CTLA-4 Neutralizing antibody (BME100022) in a linear range of 0.13-16.0 ng/ml.

A

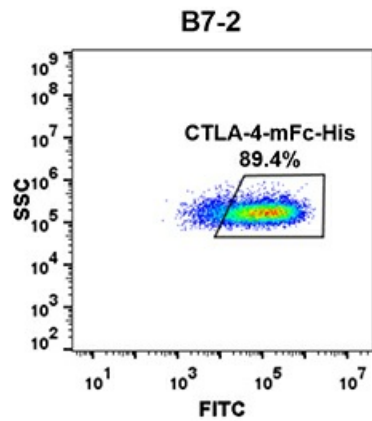


Figure 5. HEK293 cell line transfected with irrelevant protein (B) and human B7-2 (A) were surface stained with Human CTLA4, mFc-His tagged protein (TP723940) 1µg/ml followed by Alexa 488-conjugated anti-mouse IgG secondary antibody.