

Product datasheet for **TP723929**

Syndecan 1 (SDC1) Human Recombinant Protein

Product data:

Product Type:	Recombinant Proteins
Description:	Human CD138 Protein, hFc-His Tag
Species:	Human
Expression Host:	HEK293
Expression cDNA Clone or AA Sequence:	CD138[Gln23-Gly254]+hFc[Glu99-Ala330]+6×His tag
Tag:	C-Human Fc and 6×His
Predicted MW:	50.8 kDa
Purity:	> 95%
Buffer:	Lyophilized from sterile PBS, pH 7.4. Normally 5% - 8% trehalose is added as protectants before lyophilization
Reconstitution Method:	Reconstitute with deionized water
Preparation:	Affinity purification
Applications:	ELISA
Storage:	Store the lyophilized protein at -20°C. After reconstitution, store the protein at -80°C for 12 months. Avoid repeated freezing and thawing.
Stability:	12 months from date of despatch
Locus ID:	6382
UniProt ID:	P18827
Summary:	Syndecan-1 (SYND1 or SDC1) is also known as CD antigen CD138, is a transmembrane (type I) heparan sulfate proteoglycan and is a member of the syndecan proteoglycan family. The syndecans mediate cell binding, cell signaling, and cytoskeletal organization and syndecan receptors are required for internalization of the HIV-1 tat protein. The syndecan-1 / SDC1 protein functions as an integral membrane protein and participates in cell proliferation, cell migration and cell-matrix interactions via its receptor for extracellular matrix proteins. It is a useful marker for plasma cells, but only if the cells tested are already known to be derived from blood.



[View online »](#)

Product images:

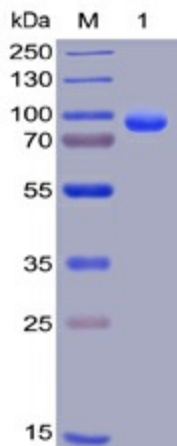


Figure 1. Human CD138, hFc-His Tag on SDS-PAGE under reducing condition.

Human CD138, hFc-His Tagged protein ELISA

0.2 µg of Human CD138, hFc-His Tagged protein per well

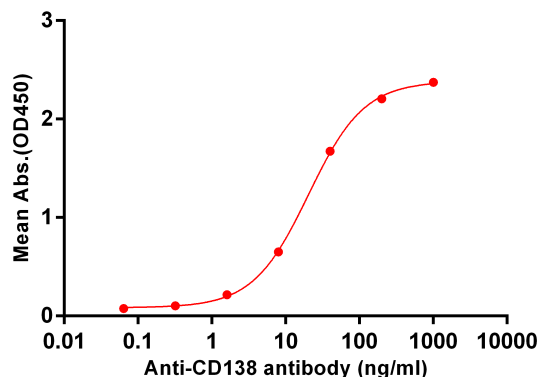


Figure 2. ELISA plate pre-coated by 2 µg/ml (100 µl/well) Human CD138, hFc-His tagged protein (TP723929) can bind Anti-CD138 antibody in a linear range of 1.6-200 ng/ml.