

Product datasheet for **TP723928**

CD22 Human Recombinant Protein

Product data:

Product Type:	Recombinant Proteins
Description:	Human CD22 Protein, hFc-His Tag
Species:	Human
Expression Host:	HEK293
Expression cDNA Clone or AA Sequence:	CD22[Asp20-Arg687]+hFc[Glu99-Ala330]+6×His tag
Tag:	C-Human Fc and 6×His
Predicted MW:	102.1 kDa
Purity:	> 95%
Buffer:	Lyophilized from sterile PBS, pH 7.4. Normally 5% - 8% trehalose is added as protectants before lyophilization
Reconstitution Method:	Reconstitute with deionized water
Preparation:	Affinity purification
Storage:	Store the lyophilized protein at -20°C. After reconstitution, store the protein at -80°C for 12 months. Avoid repeated freezing and thawing.
Stability:	12 months from date of despatch
Locus ID:	933
UniProt ID:	P20273
Summary:	B-cell receptor CD22 is also known as Sialic acid-binding Ig-like lectin 2 (Siglec-2), B-lymphocyte cell adhesion molecule (BL-CAM), T-cell surface antigen Leu-14, which belongs to the immunoglobulin superfamily and SIGLEC (sialic acid binding Ig-like lectin) family. CD22 mediates B-cell B-cell interactions, and may be involved in the localization of B-cells in lymphoid tissues. Siglec-2 / CD22 binds sialylated glycoproteins, one of which is CD45. Siglec2 / CD22 plays a role in positive regulation through interaction with Src family tyrosine kinases and may also act as an inhibitory receptor by recruiting cytoplasmic phosphatases via their SH2 domains that block signal transduction through dephosphorylation of signaling molecules.



[View online »](#)

Product images:

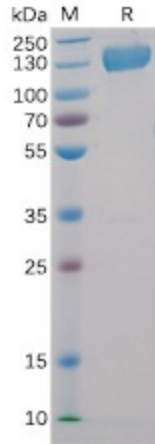


Figure 1. Human CD22, hFc-His Tag on SDS-PAGE under reducing condition.

Human CD22, hFc-His Tagged protein ELISA

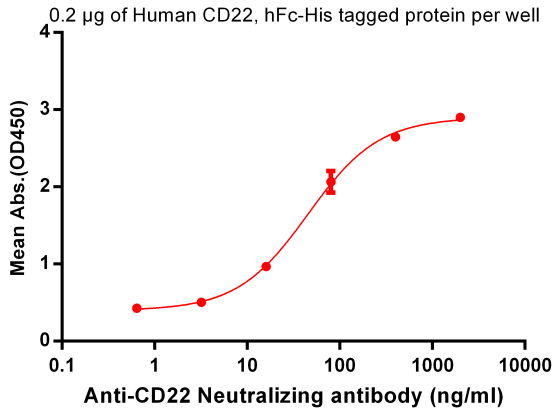


Figure 2. ELISA plate pre-coated by 2 µg/ml (100 µl/well) Human CD22, hFc-His tagged protein (TP723928) can bind Anti-CD22 Neutralizing antibody (BME100029) in a linear range of 3.2-400 ng/ml.