

Product datasheet for **TP723925**

SLAMF7 Human Recombinant Protein

Product data:

Product Type:	Recombinant Proteins
Description:	Human CS1 Protein, hFc-His Tag
Species:	Human
Expression Host:	HEK293
Expression cDNA Clone or AA Sequence:	CS1[Ser23-Met226]+hFc[Glu99-Ala330]+6×His tag
Tag:	C-Human Fc and 6×His
Predicted MW:	70 kDa
Purity:	> 95%
Buffer:	Lyophilized from sterile PBS, pH 7.4. Normally 5% - 8% trehalose is added as protectants before lyophilization
Reconstitution Method:	Reconstitute with deionized water
Preparation:	Affinity purification
Applications:	ELISA
Storage:	Store the lyophilized protein at -20°C. After reconstitution, store the protein at -80°C for 12 months. Avoid repeated freezing and thawing.
Stability:	12 months from date of despatch
Locus ID:	57823
UniProt ID:	Q9NQ25
Summary:	SLAM family member 7 (SLAMF7) is also known as CD2-like receptor-activating cytotoxic cells (CRACC), Membrane protein FOAP-12, CD antigen CD319, Novel Ly9, Protein 19A, which is a single-pass type I membrane protein and a member of the CD2 family of cell surface receptors. SLAMF7 is expressed in spleen, lymph node, peripheral blood leukocytes, bone marrow, small intestine, stomach, appendix, lung and trachea. Isoform 1 of SLAMF7 mediates NK cell activation through a SH2D1A-independent extracellular signal-regulated ERK-mediated pathway. May play a role in lymphocyte adhesion. Isoform 3 of SLAMF7 does not mediate any NK cell activation.



[View online »](#)

Product images:

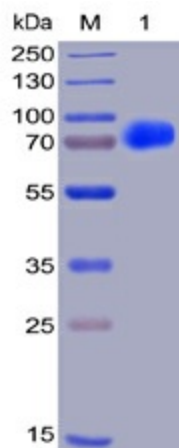


Figure 1. Human CS1, hFc-His Tag on SDS-PAGE under reducing condition.