

Product datasheet for **TP723923**

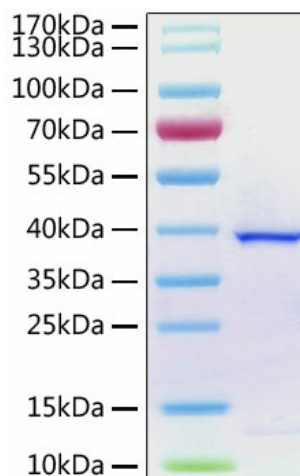
SARS-CoV-2 Papain-like Protease Recombinant Protein with His tag

Product data:

Product Type:	Recombinant Proteins
Description:	SARS-CoV-2 Papain-like Protease Recombinant Protein with His tag
Species:	SARS-CoV-2
Expression Host:	E. coli
Expression cDNA Clone or AA Sequence:	HHHHHHEVRT IKVFTTVDNI NLHTQVWDMS MTYGQQFGPT YLDGADVTKI KPHNSHEGKT FYVLPNDLTL RVEAFYYHT TDPSFLGRYM SALNHTKKWK YPQVNGLTSI KWADNNCYLA TALLTQQIE LKFNPPALQD AYYRARAGEA ANFCALILAY CNKTVGELGD VRETMSYLFQ HANLDSCKRV LNVVCKTCGQ QQTTLKGVEA VMYMGTLSE QFKKGVQIPC TCGKQATKYL VQQESPFVMM SAPPAQYELK HGTFTCASEY TGNVQCGHYK HITSKETLYC IDGALLTKSS EYKGPITDVF YKENSYTTTI K
Tag:	N-6xHis
Purity:	> 90% by SDS-PAGE.
Buffer:	Supplied as a 0.22 µm filtered solution in 20 mM Tris, 20% Glycerol, 10mM β-Me, pH 7.5
Endotoxin:	< 1.0 EU/µg of the protein by LAL method.
Protein Description:	Recombinant 2019-nCoV papain-like protease is produced by <i>E. coli</i> expression system. The target protein is expressed with sequence (Glu1564-Lys1878) of 2019-ncov papain-like protease (Accession #YP_009725299.1) fused with an 6xHis tag at the N-terminus.
Storage:	Store at -80°C.
Stability:	6 months



[View online »](#)

Product images:

Recombinant SARS-COV-2 papain-like protease with His tag was determined by SDS-PAGE with Coomassie Blue, showing a band at 38 kDa.