

Product datasheet for TP723915

SARS-CoV-2 S1+S2 ECD (S-ECD) Recombinant Protein with His tag

Product data:

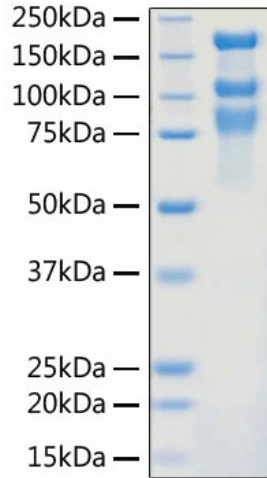
Product Type:	Recombinant Proteins
Description:	SARS-CoV-2 S1+S2 ECD (S-ECD) Recombinant Protein with His tag
Species:	SARS-CoV-2
Expression Host:	HEK293
Expression cDNA Clone or AA Sequence:	VSSQCVNLTT RTQLPPAYTN SFTRGVVYPD KVFRSSVLHS TQDLFLPFFS NVTWFHAIHV SGTNGTKRFD NPVLPFNDGV YFASTEKSNI IRGWIFGTTL DSKTQSLIV NNATNVVIKV CEFQFCNDPF LGVVYHKNNK SWMESEFRVY SSANNCTFEY VSQPFLMDLE GKQGNFKNLR EBFVKNIDGY FKIYSKHTPI NLVRDLPQGF SALEPLVDLP IGINITRFQT LLALHRSYLT PGDSSSGWTA GAAAYVGYL QPRTFLLKYN ENGTITDAVD CALDPLSETK CTLKSFTVEK GIYQTSNFRV QPTESIVRFP NITNLCPFGE VFNATRFASV YAWNKRKRISN CVADYSVLYN SASFSTFKCY GVSPTKLNLD CFTNVYADSF VIRGDEVQRQI APGQTGKIAD YNYKLPDDFT GCVIAWNSNN LDSKVGNGYN YLYRFRKSN LKPFERDIST EIQAGSTPC NGVEGFNCYF PLQSYGFQPT NGVGYQPYRV VVLSFELLHA PATVCGPKKS TNLVKNKCVN FNFNGLTGTG VLTESNKKFL PFQQFGRDIA DTTDAVRDPQ TLEILDITPC SFGGVSVITP GTNTSNQVAV LYQDVNCTEV PVAIHADQLT PTWRVYSTGS NVFQTRAGCL IGAETHVNSY ECDIPIGAGI CASYQTQNS PRRARSVASQ SIIAYTMSLG AENSVAYSNN SIAIPTNFTI SVTTEILPVS MTKTSVDCTM YICGDSTECN NLLQYGSFC TQLNRALTGI AVEQDKNTQE VFAQVKQIYK TPIKDFGGF NFSQILPDPS KPSKRSFIED LLFNKVTLD AGFIKQYGDC LGDIAARDLI CAQKFNGLTV LPPLLTDEMI AQYTSALLAG TITSGWTFGA GAALQIPFAM QMAYRFNGIG VTQNVLYENQ KLIANQFNSA IGKIQDSLSS TASALGKLQD VVNQNAQALN TLVKQLSSNF GAISVNLNDI LSRLDKVEAE VQIDRLITGR LQSLQTYVTQ QLIRAAEIRA SANLAATKMS ECVLGQSKRV DFCGKGYHLM SFPQSAPHG VFLHVTYVPA QEKNFTTAPA ICHDGKAHFP REGVFSVNGT HWFVTQRNFY EPQIITDNT FVSGNCDVVI GIVNNTVYDP LQPELDSFKE ELDKYFKNHT SPDVDLGDIS GINASVNIQ KEIDRLNEVA KNLNESLIDL QELGKYEQ
Tag:	C-6xHis
Purity:	>95% by SDS-PAGE.
Buffer:	Supplied as a 0.22 µm filtered solution in PBS, pH 7.4.
Endotoxin:	< 1.0 EU/µg of the protein by LAL method.
Protein Description:	Recombinant 2019-nCoV S1+S2 ECD (S-ECD) Protein is produced by HEK293 cells expression system. The target protein is expressed with sequence (Val11-Gln1208) of 2019-ncov S1+S2 ECD (S-ECD) (Accession #YP_009724390.1) fused with a 6xHis tag at the C-terminus.



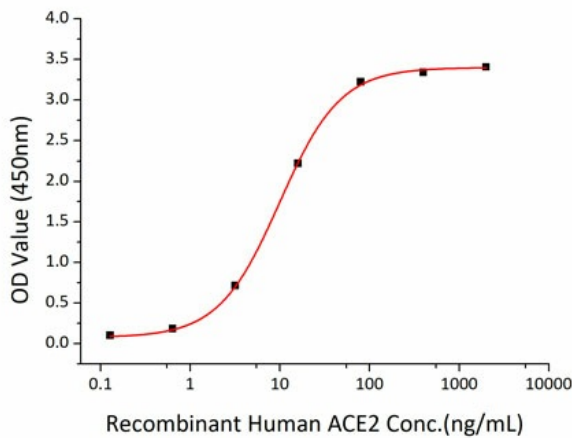
[View online »](#)

Storage: Store at -80°C.
 Stability: 6 months
 Locus ID: 43740568

Product images:



Recombinant SARS-COV-2 S1+S2 ECD (S-ECD) Protein with His tag was determined by SDS-PAGE with Coomassie Blue, showing bands around 80,110,180 kDa.



Immobilized Recombinant SARS-COV-2 Spike S1+S2 ECD-His at 2µg/mL (100 µL/well) can bind Recombinant Human ACE2 with a linear range of 0.15-9.92 ng/mL.