

Product datasheet for **TP723266**

LEC (CCL16) (NM_004590) Human Recombinant Protein

Product data:

Product Type:	Recombinant Proteins
Description:	Purified recombinant protein of Human chemokine (C-C motif) ligand 16 (CCL16).
Species:	Human
Expression Host:	E. coli
Expression cDNA Clone or AA Sequence:	QPKVPEWVNT PSTCCLKYYE KVLPRRLVVG YRKALNCHLP AIIFVTKRNR EVCTNPNDWW VQEYIKDPNL PLLPTRNLST VKIITAKNGQ PQLLSQ
Tag:	Tag Free
Predicted MW:	11.2 kDa
Concentration:	lot specific
Purity:	>95% as determined by SDS-PAGE and Coomassie blue staining
Buffer:	Lyophilized from a 0.2 µM filtered solution of 20mM phosphate buffer, 100mM NaCl, pH 7.2
Bioactivity:	Determined by its ability to chemoattract total human monocytes using a concentration range of 10-100 ng/ml. Ex vivo tissue treatment (PMID: 28362325) Lymphocyte antigen stimulation (PMID: 29946459)
Endotoxin:	Endotoxin level is < 0.1 ng/µg of protein (< 1 EU/µg)
Storage:	Store at -80°C.
Stability:	Stable for at least 6 months from date of receipt under proper storage and handling conditions.
RefSeq:	NP_004581
Locus ID:	6360
UniProt ID:	O15467
RefSeq Size:	1497
Cytogenetics:	17q12
RefSeq ORF:	360
Synonyms:	CKb12; HCC-4; ILINCK; LCC-1; LEC; LMC; Mtn-1; NCC-4; NCC4; SCYA16; SCYL4



[View online »](#)

Summary:

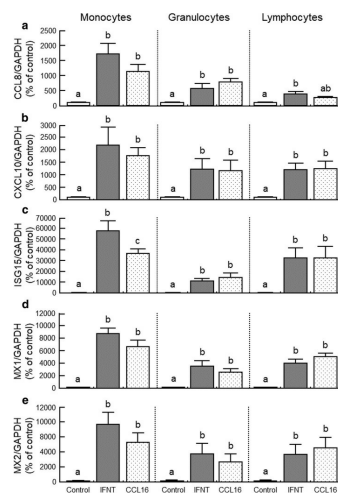
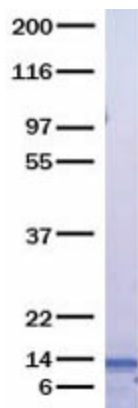
This gene is one of several cytokine genes clustered on the q-arm of chromosome 17. Cytokines are a family of secreted proteins involved in immunoregulatory and inflammatory processes. The CC cytokines are proteins characterized by two adjacent cysteines. The cytokine encoded by this gene displays chemotactic activity for lymphocytes and monocytes but not for neutrophils. This cytokine also shows a potent myelosuppressive activity and suppresses proliferation of myeloid progenitor cells. The expression of this gene is upregulated by IL-10. [provided by RefSeq, Jul 2008]

Protein Families:

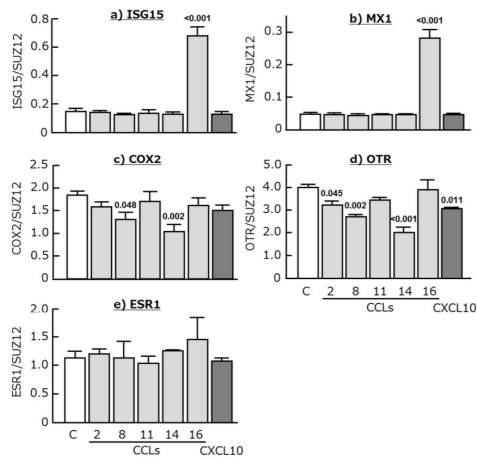
Druggable Genome, Secreted Protein

Protein Pathways:

Chemokine signaling pathway, Cytokine-cytokine receptor interaction

Product images:


Effects of CCL16 (100 ng/mL, OriGene TP723266) and interferon-tau (IFNT; 100 ng/mL) on the mRNA expression of CCL8, CXCL10, ISG15, MX1, and MX2 in cultured monocytes, granulocytes, and lymphocytes. Data are shown as the percentage of the control value (n = 5). Different letters indicate significant differences (P < 0.05). Figure cited from J Anim Sci Biotechnol, PMID: 29946459



Effects of CCL2, CCL8, CCL11, CCL14, CCL16 (OriGene TP723266), and CXCL10 (50 ng/mL each) on the mRNA expression of interferon-stimulated gene 15 (ISG15), myxovirus-resistance gene 1 (MX1), cyclooxygenase 2 (COX2), oxytocin receptor (OTR), and estrogen receptor 1 (ESR1) in cultured bovine endometrial tissues. Figure cited from Int J Mol Sci, PMID: 28362325

□