

Product datasheet for **TP721488M**

GLP1R Human Recombinant Protein, Synthetic Nanodisc

Product data:

Product Type:	Recombinant Proteins
Description:	Recombinant Human GLP1R full length protein-Synthetic Nanodisc, 100µg
Species:	Human
Expression Host:	HEK293
Expression cDNA Clone or AA Sequence:	C-terminal Flag tagged overexpression cDNA clone
Tag:	C-term Flag Tag
Predicted MW:	The human full length GLP1R protein has a MW of 53.0 kDa
Concentration:	Please refer to the Certificate of Analysis (COA) for the lot-specific concentration before lyophilization.
Purity:	The purity of the protein is determined by SDS-PAGE and Coomassie blue staining.
Buffer:	Lyophilized from nanodisc solubilization buffer (20 mM Tris-HCl, 150 mM NaCl, pH 8.0). Normally 5% - 8% trehalose is added as protectants before lyophilization. Do not use solvents with pH lower than 6.5 in subsequent experiments.
Reconstitution Method:	<ol style="list-style-type: none"> 1. Before opening the tube cap, centrifuge the sample tube at 5000g for 3-5min at room temperature to ensure the lyophilized sample settles down at the bottom of the tube. 2. Calculate the volume for reconstitution (in µL) using the formula: [Quantity (mg)/Concentration (mg/mL)]x1000 3. Dissolve the lyophilized protein sample in sterile water based on the calculated volume (µL) 4. After adding sterile water, cover the lid and mix by gently tapping the tube 5-10 times. Note: Do not vortex or vigorously pipette the sample.
Preparation:	Affinity purification
Storage:	Store at -20°C to -80°C for 12 months in lyophilized form.
Stability:	After reconstitution, if not intended for use within a month, aliquot and store at -80°C . Avoid repeated freezing and thawing.
Locus ID:	2740
UniProt ID:	P43220
Synonyms:	GLP-1; GLP-1-R; GLP-1R


[View online »](#)

Protein Families: Druggable Genome, GPCR, Transmembrane

Protein Pathways: Chemokine signaling pathway, Cytokine-cytokine receptor interaction

Product images:

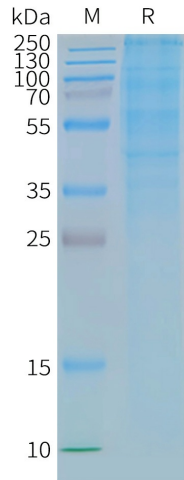


Figure 2. Human GLP1R-Nanodisc, Flag Tag on SDS-PAGE

ELISA assay to evaluate GLP1R-Nanodisc
0.2µg Human GLP1R-Nanodisc per well

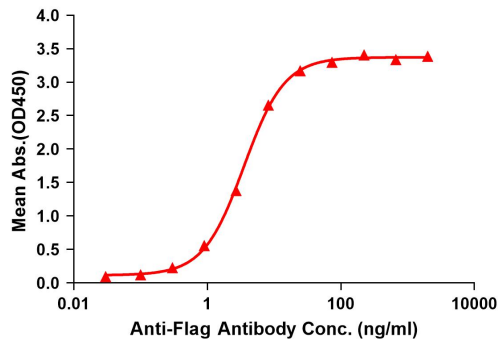


Figure 1. Elisa plates were pre-coated with Flag Tag GLP1R-Nanodisc (0.2µg/per well). Serial diluted anti-Flag monoclonal antibody solutions were added, washed, and incubated with secondary antibody before Elisa reading. From above data, the EC50 for anti-Flag monoclonal antibody binding with GLP1R-Nanodisc is 3.549ng/ml.