

## Product datasheet for **TP721488**

### GLP1R Human Recombinant Protein, Synthetic Nanodisc

#### Product data:

Product Type:	Recombinant Proteins
Description:	Recombinant Human GLP1R full length protein-Synthetic Nanodisc, 10µg
Species:	Human
Expression Host:	HEK293
Expression cDNA Clone or AA Sequence:	C-terminal Flag tagged overexpression cDNA clone
Tag:	C-term Flag Tag
Predicted MW:	The human full length GLP1R protein has a MW of 53.0 kDa
Concentration:	Please refer to the Certificate of Analysis (COA) for the lot-specific concentration before lyophilization.
Purity:	The purity of the protein is determined by SDS-PAGE and Coomassie blue staining.
Buffer:	Lyophilized from nanodisc solubilization buffer (20 mM Tris-HCl, 150 mM NaCl, pH 8.0). Normally 5% - 8% trehalose is added as protectants before lyophilization. Do not use solvents with pH lower than 6.5 in subsequent experiments.
Reconstitution Method:	<ol style="list-style-type: none"> <li>1. Before opening the tube cap, centrifuge the sample tube at 5000g for 3-5min at room temperature to ensure the lyophilized sample settles down at the bottom of the tube.</li> <li>2. Calculate the volume for reconstitution (in µL) using the formula: [Quantity (mg)/Concentration (mg/mL)]x1000</li> <li>3. Dissolve the lyophilized protein sample in sterile water based on the calculated volume (µL)</li> <li>4. After adding sterile water, cover the lid and mix by gently tapping the tube 5-10 times. Note: Do not vortex or vigorously pipette the sample.</li> </ol>
Preparation:	Affinity purification
Storage:	Store at -20°C to -80°C for 12 months in lyophilized form.
Stability:	After reconstitution, if not intended for use within a month, aliquot and store at -80°C . Avoid repeated freezing and thawing.
Locus ID:	2740
UniProt ID:	<a href="#">P43220</a>
Synonyms:	GLP-1; GLP-1-R; GLP-1R



[View online »](#)

**Protein Families:** Druggable Genome, GPCR, Transmembrane

**Protein Pathways:** Chemokine signaling pathway, Cytokine-cytokine receptor interaction

**Product images:**

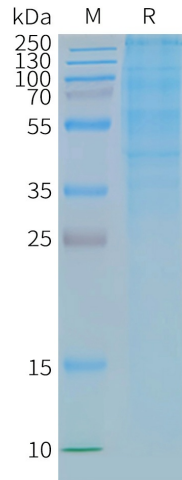


Figure 2. Human GLP1R-Nanodisc, Flag Tag on SDS-PAGE

**ELISA assay to evaluate GLP1R-Nanodisc**  
0.2µg Human GLP1R-Nanodisc per well

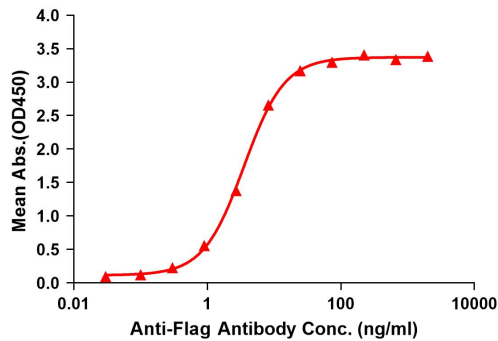


Figure 1. Elisa plates were pre-coated with Flag Tag GLP1R-Nanodisc (0.2µg/per well). Serial diluted anti-Flag monoclonal antibody solutions were added, washed, and incubated with secondary antibody before Elisa reading. From above data, the EC50 for anti-Flag monoclonal antibody binding with GLP1R-Nanodisc is 3.549ng/ml.