

Product datasheet for **TP721400M**

CCR2 Human Recombinant Protein, Synthetic Nanodisc

Product data:

Product Type:	Recombinant Proteins
Description:	Recombinant Human CCR2 full length protein-Synthetic Nanodisc, 100µg
Species:	Human
Expression Host:	HEK293
Expression cDNA Clone or AA Sequence:	C-terminal Flag tagged overexpression cDNA clone
Tag:	C-term Flag Tag
Predicted MW:	The human full length CCR2 protein has a MW of 41.9 kDa
Concentration:	Please refer to the Certificate of Analysis (COA) for the lot-specific concentration before lyophilization.
Purity:	The purity of the protein is determined by SDS-PAGE and Coomassie blue staining.
Buffer:	Lyophilized from nanodisc solubilization buffer (20 mM Tris-HCl, 150 mM NaCl, pH 8.0). Normally 5% - 8% trehalose is added as protectants before lyophilization. Do not use solvents with pH lower than 6.5 in subsequent experiments.
Reconstitution Method:	<ol style="list-style-type: none"> Before opening the tube cap, centrifuge the sample tube at 5000g for 3-5min at room temperature to ensure the lyophilized sample settles down at the bottom of the tube. Calculate the volume for reconstitution (in µL) using the formula: [Quantity (mg)/Concentration (mg/mL)]x1000 Dissolve the lyophilized protein sample in sterile water based on the calculated volume (µL) After adding sterile water, cover the lid and mix by gently tapping the tube 5-10 times. Note: Do not vortex or vigorously pipette the sample.
Preparation:	Affinity purification
Storage:	Store at -20°C to -80°C for 12 months in lyophilized form.
Stability:	After reconstitution, if not intended for use within a month, aliquot and store at -80°C . Avoid repeated freezing and thawing.
Locus ID:	729230
UniProt ID:	P41597
Synonyms:	CC-CKR-2; CCR-2; CCR2A; CCR2B; CD192; CKR2; CKR2A; CKR2B; CMKBR2; MCP-1-R


[View online »](#)

Protein Families: Transmembrane

Protein Pathways: Hematopoietic cell lineage

Product images:

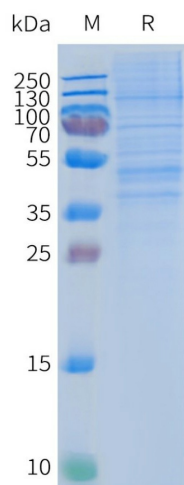


Figure 2. Human CCR2-Nanodisc, Flag Tag on SDS-PAGE

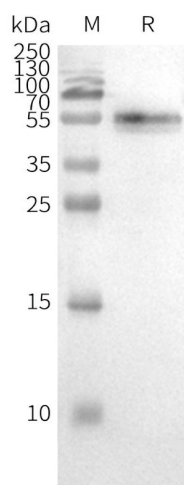


Figure 3. WB analysis of Human CCR2-Nanodisc with anti-CCR2 monoclonal antibody, followed by Goat Anti-Human IgG HRP at 1/5000 dilution

ELISA assay to evaluate CCR2-Nanodisc 0.2µg Human CCR2-Nanodisc per well

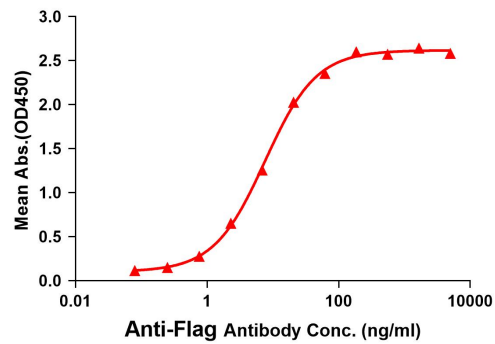


Figure 1. Elisa plates were pre-coated with Flag Tag CCR2-Nanodisc (0.2µg/per well). Serial diluted anti-Flag monoclonal antibody solutions were added, washed, and incubated with secondary antibody before Elisa reading. From above data, the EC50 for anti-Flag monoclonal antibody binding with CCR2-Nanodisc is 7.62ng/ml.