

Product datasheet for **TP721400**

CCR2 Human Recombinant Protein, Synthetic Nanodisc

Product data:

Product Type:	Recombinant Proteins
Description:	Recombinant Human CCR2 full length protein-Synthetic Nanodisc, 10µg
Species:	Human
Expression Host:	HEK293
Expression cDNA Clone or AA Sequence:	C-terminal Flag tagged overexpression cDNA clone
Tag:	C-term Flag Tag
Predicted MW:	The human full length CCR2 protein has a MW of 41.9 kDa
Concentration:	Please refer to the Certificate of Analysis (COA) for the lot-specific concentration before lyophilization.
Purity:	The purity of the protein is determined by SDS-PAGE and Coomassie blue staining.
Buffer:	Lyophilized from nanodisc solubilization buffer (20 mM Tris-HCl, 150 mM NaCl, pH 8.0). Normally 5% - 8% trehalose is added as protectants before lyophilization. Do not use solvents with pH lower than 6.5 in subsequent experiments.
Reconstitution Method:	<ol style="list-style-type: none"> 1. Before opening the tube cap, centrifuge the sample tube at 5000g for 3-5min at room temperature to ensure the lyophilized sample settles down at the bottom of the tube. 2. Calculate the volume for reconstitution (in µL) using the formula: [Quantity (mg)/Concentration (mg/mL)]x1000 3. Dissolve the lyophilized protein sample in sterile water based on the calculated volume (µL) 4. After adding sterile water, cover the lid and mix by gently tapping the tube 5-10 times. Note: Do not vortex or vigorously pipette the sample.
Preparation:	Affinity purification
Storage:	Store at -20°C to -80°C for 12 months in lyophilized form.
Stability:	After reconstitution, if not intended for use within a month, aliquot and store at -80°C . Avoid repeated freezing and thawing.
Locus ID:	729230
UniProt ID:	P41597
Synonyms:	CC-CKR-2; CCR-2; CCR2A; CCR2B; CD192; CKR2; CKR2A; CKR2B; CMKBR2; MCP-1-R


[View online »](#)

Protein Families: Transmembrane

Protein Pathways: Hematopoietic cell lineage

Product images:

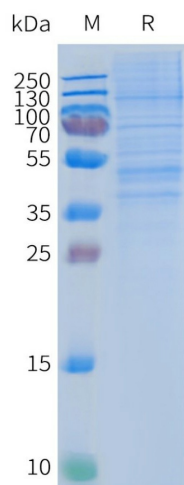


Figure 2. Human CCR2-Nanodisc, Flag Tag on SDS-PAGE

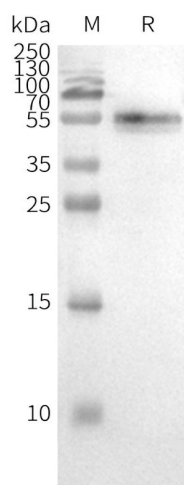


Figure 3. WB analysis of Human CCR2-Nanodisc with anti-CCR2 monoclonal antibody, followed by Goat Anti-Human IgG HRP at 1/5000 dilution

ELISA assay to evaluate CCR2-Nanodisc 0.2µg Human CCR2-Nanodisc per well

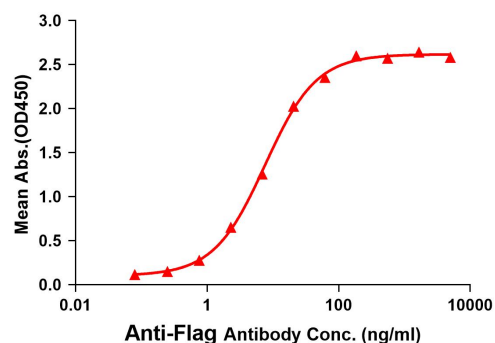


Figure 1. Elisa plates were pre-coated with Flag Tag CCR2-Nanodisc (0.2µg/per well). Serial diluted anti-Flag monoclonal antibody solutions were added, washed, and incubated with secondary antibody before Elisa reading. From above data, the EC50 for anti-Flag monoclonal antibody binding with CCR2-Nanodisc is 7.62ng/ml.