

## Product datasheet for **TP721388M**

### CLDN18.2 Human Recombinant Protein, Synthetic Nanodisc

#### Product data:

Product Type:	Recombinant Proteins
Description:	Recombinant Human CLDN18.2 full length protein-Synthetic Nanodisc, 100µg
Species:	Human
Expression Host:	HEK293
Expression cDNA Clone or AA Sequence:	C-terminal Flag tagged overexpression cDNA clone
Tag:	C-term Flag Tag
Predicted MW:	The human full length CLDN18.2 Protein has a MW of 27.5 kDa
Concentration:	Please refer to the Certificate of Analysis (COA) for the lot-specific concentration before lyophilization.
Purity:	The purity of the protein is determined by SDS-PAGE and Coomassie blue staining.
Buffer:	Lyophilized from nanodisc solubilization buffer (20 mM Tris-HCl, 150 mM NaCl, pH 8.0). Normally 5% - 8% trehalose is added as protectants before lyophilization. Do not use solvents with pH lower than 6.5 in subsequent experiments.
Reconstitution Method:	<ol style="list-style-type: none"> <li>1. Before opening the tube cap, centrifuge the sample tube at 5000g for 3-5min at room temperature to ensure the lyophilized sample settles down at the bottom of the tube.</li> <li>2. Calculate the volume for reconstitution (in µL) using the formula: [Quantity (mg)/Concentration (mg/mL)]x1000</li> <li>3. Dissolve the lyophilized protein sample in sterile water based on the calculated volume (µL)</li> <li>4. After adding sterile water, cover the lid and mix by gently tapping the tube 5-10 times. Note: Do not vortex or vigorously pipette the sample.</li> </ol>
Preparation:	Affinity purification
Storage:	Store at -20°C to -80°C for 12 months in lyophilized form.
Stability:	After reconstitution, if not intended for use within a month, aliquot and store at -80°C . Avoid repeated freezing and thawing.
Locus ID:	51208
UniProt ID:	<a href="#">P56856</a>
Synonyms:	Claudin 18.2



[View online »](#)

**Protein Families:** Druggable Genome, Transmembrane

**Protein Pathways:** Chemokine signaling pathway, Cytokine-cytokine receptor interaction

**Product images:**

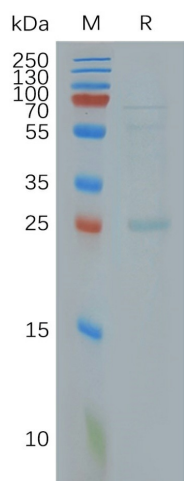


Figure 2. Human CLDN18.2-Nanodisc, Flag Tag on SDS-PAGE

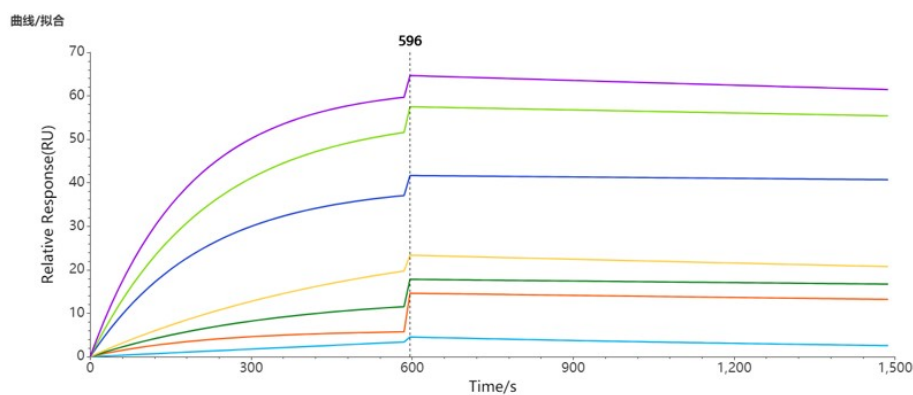


Figure 3. Human CLDN18.2-Nanodisc can bind Anti-CLDN18.2 antibody with an affinity constant of 1.619 nM as determined in a SPR assay.

ELISA assay to evaluate CLDN18.2-Nanodisc  
0.2µg Human CLDN18.2 Nanodisc per well

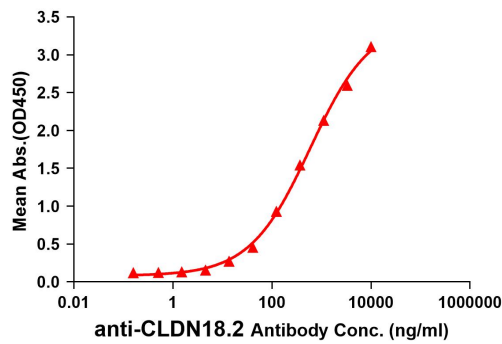


Figure 1. Elisa plates were added with Flag Tag CLDN18.2-Nanodisc (0.2µg/per well) on an anti-Flag monoclonal antibody pre-coated (0.2µg/per well) plate. Serial diluted anti- CLDN18.2 monoclonal antibody solutions were added, washed, and incubated with secondary antibody before Elisa reading. From above data, the EC50 for anti- CLDN18.2 monoclonal antibody binding with CLDN18.2-Nanodisc is 593.6ng/ml.