

## Product datasheet for **TP721362M**

### SECTM1 Human Recombinant Protein

#### Product data:

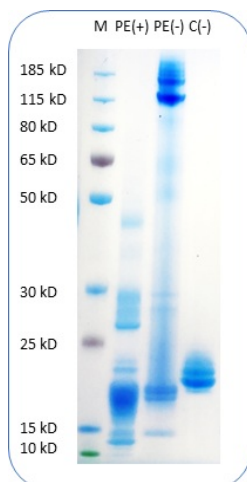
Product Type:	Recombinant Proteins
Description:	PE Conjugated Human SECTM1 Protein (C-His)
Species:	Human
Expression Host:	CHO
Expression cDNA Clone or AA Sequence:	Gln29-Gly145
Tag:	C-His
Predicted MW:	The protein has a predicted molecular weight of 14kDa and migrates at approximately 20kDa on SDS-PAGE with DTT-reduced condition before PE conjugation.
Concentration:	25µg size is bottled at 0.1mg/mL concentration. 100 µg size is bottled at lot specific concentration.
Purity:	>90%
Conjugation:	PE
Buffer:	1xPBS buffer, pH7.4, 0.09% NaN <sub>3</sub> with a carrier protein
Bioactivity:	Positive

The definition of the active protein (purified and biotinylated) is defined as the protein that can bind to its biological receptor/ligand. For conjugated protein, it is defined with its function to bind to the ScFv of the active CAR-transfected cells in flow cytometry test.

Preparation:	Affinity Ni-NTA
Applications:	FACS
Storage:	An unopened vial can be stored at 4°C for 2 weeks or at -20°C and below for six months. This stock solution should be aliquoted and stored at ≤ -70°C to minimize the freeze/thaw cycles.
Stability:	6 Months
RefSeq:	<a href="#">Q8WVN6</a>
Locus ID:	6398
UniProt ID:	<a href="#">Q8WVN6</a>



[View online »](#)

**Product images:**

PE conjugated Human SECTM1 Protein (C-His) on SDS-PAGE under reducing condition PE (+) and non-reducing condition PE(-). C(-) is unconjugated Human SECTM1 Protein under non reducing condition.