

Product datasheet for **TP721330**

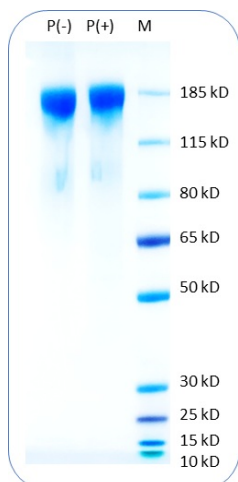
L1CAM Human Recombinant Protein

Product data:

| | |
|---------------------------------------|--|
| Product Type: | Recombinant Proteins |
| Description: | Human CD171/L1CAM Protein (C-His-Avi) |
| Species: | Human |
| Expression Host: | CHO |
| Expression cDNA Clone or AA Sequence: | Ile20-Glu1120 |
| Tag: | C-His-Avi |
| Predicted MW: | The protein has a predicted molecular weight of 127 kDa and migrates at approximately 160-180 kDa on SDS-PAGE with DTT-reduced conditions. |
| Concentration: | 25µg size is bottled at 0.2mg/mL concentration. 100 µg size is bottled at lot specific concentration. |
| Purity: | >90% |
| Buffer: | 1xPBS buffer, pH7.4 |
| Bioactivity: | Positive |
| | <p>The definition of the active protein (purified and biotinylated) is defined as the protein that can bind to its biological receptor/ligand. For conjugated protein, it is defined with its function to bind to the ScFv of the active CAR-transfected cells in flow cytometry test.</p> |
| Preparation: | Affinity Ni-NTA |
| Applications: | ELISA |
| Storage: | An unopened vial can be stored at 4°C for 2 weeks or at -20°C and below for six months. This stock solution should be aliquoted and stored at ≤ -70°C to minimize the freeze/thaw cycles. |
| Stability: | 6 Months |
| RefSeq: | NP_000416.1 |
| Locus ID: | 3897 |
| UniProt ID: | P32004 |



[View online »](#)

Product images:

Human CD171 Protein (C-His-Avi) on SDS-PAGE under reducing condition P(+) and non-reducing condition P(-). The purity of this protein appears to be greater than 90% based on Coomassie-blue staining.