

Product datasheet for **TP721307M**

CD22 Human Recombinant Protein

Product data:

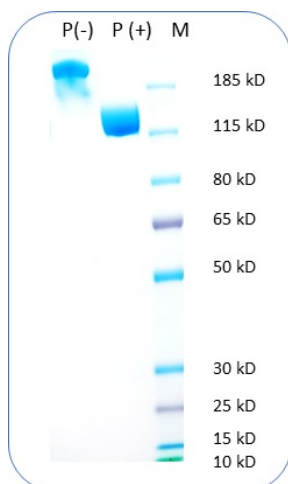
Product Type:	Recombinant Proteins
Description:	Human CD22 Protein (C-Fc)
Species:	Human
Expression Host:	CHO
Expression cDNA Clone or AA Sequence:	Met1-Arg687
Tag:	C-Fc
Predicted MW:	The protein has a predicted molecular weight of 102 kDa and migrates at approximately 120 kDa on SDS-PAGE with DTT-reduced conditions.
Concentration:	25µg size is bottled at 0.2mg/mL concentration. 100 µg size is bottled at lot specific concentration.
Purity:	>90%
Buffer:	1xPBS buffer, pH7.4
Bioactivity:	Positive

The definition of the active protein (purified and biotinylated) is defined as the protein that can bind to its biological receptor/ligand. For conjugated protein, it is defined with its function to bind to the ScFv of the active CAR-transfected cells in flow cytometry test.

Preparation:	Affinity Protein A
Applications:	ELISA
Storage:	An unopened vial can be stored at 4°C for 2 weeks or at -20°C and below for six months. This stock solution should be aliquoted and stored at ≤ -70°C to minimize the freeze/thaw cycles.
Stability:	6 Months
RefSeq:	NP_001762.2
Locus ID:	933
UniProt ID:	P20273



[View online »](#)

Product images:

Human CD22 Protein (C-Fc) on SDS-PAGE under reducing condition P(+) and non-reducing condition P(-). The purity of this protein appears to be greater than 95% based on Coomassie-blue staining.