

Product datasheet for **TP721292M**

Human Recombinant Protein

Product data:

Product Type:	Recombinant Proteins
Description:	Human PD1 Protein (C-His)
Species:	Human
Expression Host:	HEK293
Expression cDNA Clone or AA Sequence:	Leu25-Gln167
Tag:	C-His
Predicted MW:	The protein has a predicted molecular weight of 18 kDa and migrates at approximately 30-45 kDa on SDS-PAGE with DTT-reduced conditions.
Concentration:	25µg size is bottled at 0.2mg/mL concentration. 100 µg size is bottled at lot specific concentration.
Purity:	>90%
Buffer:	1xPBS buffer, pH7.4
Bioactivity:	Positive

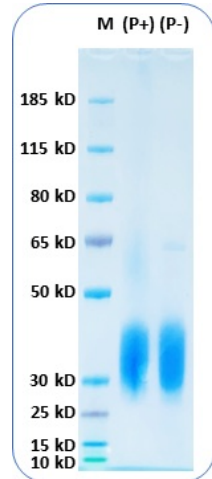
The definition of the active protein (purified and biotinylated) is defined as the protein that can bind to its biological receptor/ligand. For conjugated protein, it is defined with its function to bind to the ScFv of the active CAR-transfected cells in flow cytometry test.

Preparation:	Affinity Ni-NTA
Applications:	ELISA
Storage:	An unopened vial can be stored at 4°C for 2 weeks or at -20°C and below for six months. This stock solution should be aliquoted and stored at ≤ -70°C to minimize the freeze/thaw cycles.
Stability:	6 Months
RefSeq:	NP_005009.2
Locus ID:	5133
UniProt ID:	Q15116

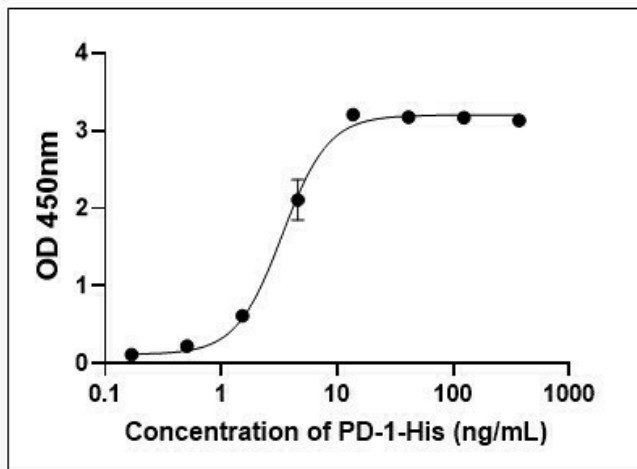


[View online »](#)

Product images:



Functional ELISA assay: Anti-human PD1 antibody is immobilized at 0.2ug/well . Followed by Human PD1 (C-His) protein at RT for 1 hour. Anti-His tag HRP conjugated antibody (1:3000) is used as the detection reagent. The results showed 50% of the optimal binding response is approximately 7 ng/mL.



Human PD1 Protein (C-His) on SDS-PAGE under reducing condition P(+) and non-reducing condition P(-). The purity of this protein appears to be greater than 95% based on Coomassie-blue staining.