

## Product datasheet for **TP721292**

### Human Recombinant Protein

#### Product data:

|                                       |   |
|---------------------------------------|---|
| Product Type:                         | Recombinant Proteins  |
| Description:                          | Human PD1 Protein (C-His)   |
| Species:                              | Human   |
| Expression Host:                      | HEK293  |
| Expression cDNA Clone or AA Sequence: | Leu25-Gln167  |
| Tag:                                  | C-His   |
| Predicted MW:                         | The protein has a predicted molecular weight of 18 kDa and migrates at approximately 30-45 kDa on SDS-PAGE with DTT-reduced conditions. |
| Concentration:                        | 25µg size is bottled at 0.2mg/mL concentration. 100 µg size is bottled at lot specific concentration.                                   |
| Purity:                               | >90%  |
| Buffer:                               | 1xPBS buffer, pH7.4   |
| Bioactivity:                          | Positive  |

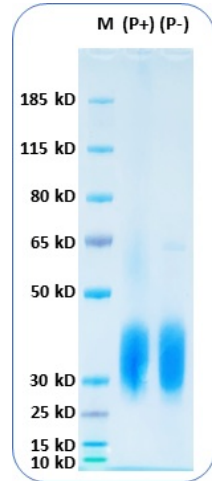
The definition of the active protein (purified and biotinylated) is defined as the protein that can bind to its biological receptor/ligand. For conjugated protein, it is defined with its function to bind to the ScFv of the active CAR-transfected cells in flow cytometry test.

|               |   |
|---------------|---|
| Preparation:  | Affinity Ni-NTA   |
| Applications: | ELISA   |
| Storage:      | An unopened vial can be stored at 4°C for 2 weeks or at -20°C and below for six months. This stock solution should be aliquoted and stored at ≤ -70°C to minimize the freeze/thaw cycles. |
| Stability:    | 6 Months  |
| RefSeq:       | <a href="#">NP_005009.2</a>   |
| Locus ID:     | 5133  |
| UniProt ID:   | <a href="#">Q15116</a>  |

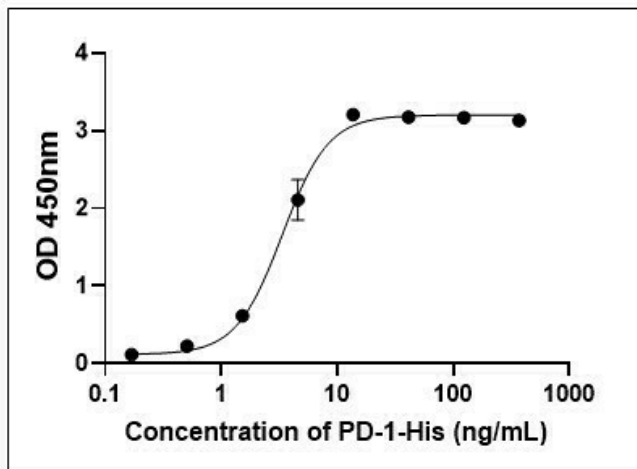


[View online »](#)

Product images:



Functional ELISA assay: Anti-human PD1 antibody is immobilized at 0.2ug/well . Followed by Human PD1 (C-His) protein at RT for 1 hour. Anti-His tag HRP conjugated antibody (1:3000) is used as the detection reagent. The results showed 50% of the optimal binding response is approximately 7 ng/mL.



Human PD1 Protein (C-His) on SDS-PAGE under reducing condition P(+) and non-reducing condition P(-). The purity of this protein appears to be greater than 95% based on Coomassie-blue staining.