

Product datasheet for **TP721280**

Glypican 3 (GPC3) Human Recombinant Protein

Product data:

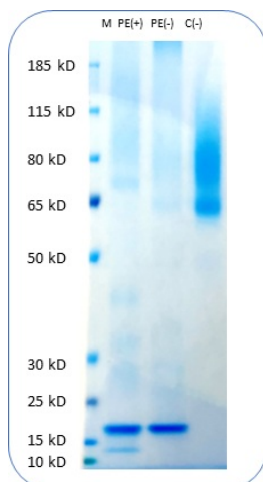
Product Type:	Recombinant Proteins
Description:	PE Conjugated Human Glypican-3 Protein (C-His)
Species:	Human
Expression Host:	CHO
Expression cDNA Clone or AA Sequence:	Gln25-His559
Tag:	C-His
Predicted MW:	The protein has a predicted molecular weight of 60.7 kDa and migrates at approximately 70 kDa on SDS-PAGE with DTT-reduced conditions before APC conjugation.
Concentration:	25µg size is bottled at 0.1mg/mL concentration. 100 µg size is bottled at lot specific concentration.
Purity:	>90%
Conjugation:	PE
Buffer:	1xPBS buffer, pH7.4, 0.09% NaN3 with a carrier protein
Bioactivity:	Positive

The definition of the active protein (purified and biotinylated) is defined as the protein that can bind to its biological receptor/ligand. For conjugated protein, it is defined with its function to bind to the ScFv of the active CAR-transfected cells in flow cytometry test.

Preparation:	Affinity Protein A
Applications:	FACS
Storage:	An unopened vial can be stored at 4°C for 2 weeks or at -20°C and below for six months. This stock solution should be aliquoted and stored at ≤ -70°C to minimize the freeze/thaw cycles.
Stability:	6 Months
RefSeq:	P51654
Locus ID:	2719
UniProt ID:	P51654



[View online »](#)

Product images:

PE conjugated Human GPC3 Protein (C-His) on SDS-PAGE under reducing condition PE(+) and non-reducing condition PE(-); C(-) is unconjugated protein.