

Product datasheet for **TP721259M**

CD274 Human Recombinant Protein

Product data:

Product Type: Recombinant Proteins

Description: Human PD-L1 Protein (C-Fc)

Species: Human

Expression Host: HEK293

**Expression cDNA Clone
or AA Sequence:** Phe19-Thr239

Tag: C-Fc

Predicted MW: The protein has a predicted molecular weight of 53kDa. The protein migrates at approximately 70kDa on SDS-PAGE with DTT-reduced conditions.

Concentration: 25µg size is bottled at 0.2mg/mL concentration. 100 µg size is bottled at lot specific concentration.

Purity: >90%

Buffer: 1xPBS buffer, pH7.4

Bioactivity: Positive

The definition of the active protein (purified and biotinylated) is defined as the protein that can bind to its biological receptor/ligand. For conjugated protein, it is defined with its function to bind to the ScFv of the active CAR-transfected cells in flow cytometry test.

Preparation: Affinity Protein A

Applications: ELISA

Storage: An unopened vial can be stored at 4°C for 2 weeks or at -20°C and below for six months. This stock solution should be aliquoted and stored at ≤ -70°C to minimize the freeze/thaw cycles.

Stability: 6 Months

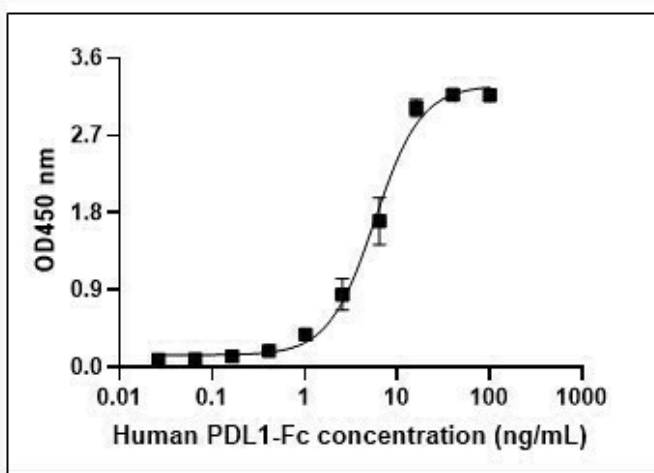
RefSeq: [NP_054862.1](#)

Locus ID: 29126

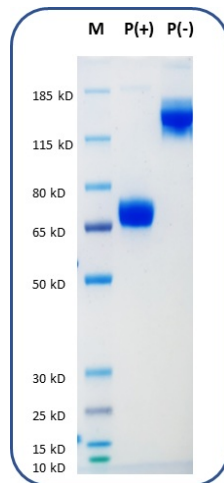
UniProt ID: [Q9NZQ7](#)



[View online »](#)

Product images:

Functional ELISA assay: Streptavidin is immobilized at 2ug/mL, 100 μ L/well. Followed by biotinylated Human PD1 (C-His-Avi) at 0.5ug/mL and a series dilution of recombinant Human PD-L1 (C-Fc). HRP Anti-hlgG1 secondary antibody (1:5000) is used as detection reagent. The results showed 50% of the optimal binding response is approximately 6 ng/mL.



Human PD-L1 protein (C-Fc) on SDS-PAGE under reducing condition P(+) and non-reducing condition P(-). The purity of this protein appears to be greater than 95% based on Coomassie-blue staining.