

Product datasheet for **TP721254M**

CD274 Human Recombinant Protein

Product data:

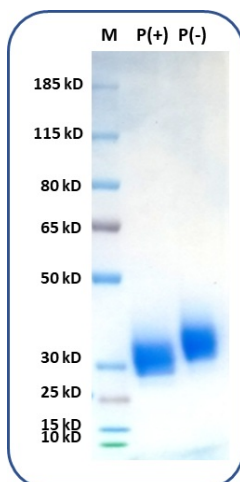
| | |
|---------------------------------------|---|
| Product Type: | Recombinant Proteins |
| Description: | Human PD-L1 Protein (C-His) |
| Species: | Human |
| Expression Host: | HEK293 |
| Expression cDNA Clone or AA Sequence: | Phe19-Thr239 |
| Tag: | C-His |
| Predicted MW: | The protein has a predicted molecular weight of 27kDa and migrates at approximately 38kDa on SDS-PAGE with DTT-reduced condition. |
| Concentration: | 25µg size is bottled at 0.2mg/mL concentration. 100 µg size is bottled at lot specific concentration. |
| Purity: | >90% |
| Buffer: | 1xPBS buffer, pH7.4 |
| Bioactivity: | Positive |

The definition of the active protein (purified and biotinylated) is defined as the protein that can bind to its biological receptor/ligand. For conjugated protein, it is defined with its function to bind to the ScFv of the active CAR-transfected cells in flow cytometry test.

| | |
|---------------|---|
| Preparation: | Affinity Ni-NTA |
| Applications: | ELISA |
| Storage: | An unopened vial can be stored at 4°C for 2 weeks or at -20°C and below for six months. This stock solution should be aliquoted and stored at ≤ -70°C to minimize the freeze/thaw cycles. |
| Stability: | 6 Months |
| RefSeq: | NP_054862.1 |
| Locus ID: | 29126 |
| UniProt ID: | Q9NZQ7 |



[View online »](#)

Product images:

Human PD-L1 protein (C-His) on SDS-PAGE under reducing condition P(+) and non-reducing condition P(-). The purity of this protein appears to be greater than 95% based on Coomassie-blue staining.