

## Product datasheet for **TP721239XL**

### Interferon gamma (IFNG) (NM\_000619) Human Recombinant Protein

#### Product data:

Product Type:	Recombinant Proteins
Description:	Purified recombinant protein of Human interferon, gamma (IFNG)
Species:	Human
Expression Host:	HEK293
Expression cDNA Clone or AA Sequence:	Gln24-Gln166
Tag:	Tag Free
Predicted MW:	16.8 kDa
Concentration:	lot specific
Purity:	>95% as determined by SDS-PAGE and Coomassie blue staining
Buffer:	Provided lyophilized from a 0.2 µm filtered solution of 20 mM Tris-HCl, 150 mM NaCl
Bioactivity:	Cell treatment (PMID: <a href="#">28555140</a> )
Endotoxin:	Endotoxin level is < 0.1 ng/µg of protein (< 1 EU/µg)
Reconstitution Method:	Always centrifuge tubes before opening. Do not mix by vortex or pipetting. Dissolve the lyophilized protein in ddH <sub>2</sub> O. It is not recommended to reconstitute a concentration less than 100 µg/ml. Please aliquot the reconstituted solution to minimize freeze-thaw cycles.
Storage:	Store at -80°C.
Stability:	Stable for at least 6 months from date of receipt under proper storage and handling conditions.
RefSeq:	<a href="#">NP_000610</a>
Locus ID:	3458
UniProt ID:	<a href="#">P01579</a>
RefSeq Size:	1240
Cytogenetics:	12q15
RefSeq ORF:	498
Synonyms:	IFG; IFI; IMD69



[View online »](#)

**Summary:**

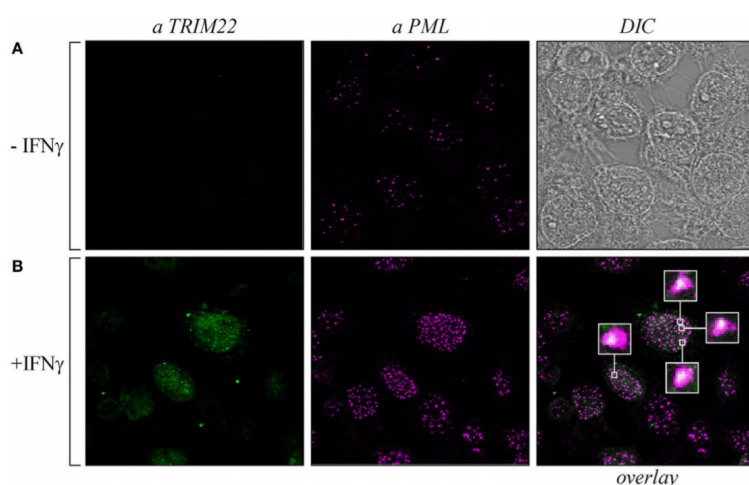
This gene encodes a soluble cytokine that is a member of the type II interferon class. The encoded protein is secreted by cells of both the innate and adaptive immune systems. The active protein is a homodimer that binds to the interferon gamma receptor which triggers a cellular response to viral and microbial infections. Mutations in this gene are associated with an increased susceptibility to viral, bacterial and parasitic infections and to several autoimmune diseases. [provided by RefSeq, Dec 2015]

**Protein Families:**

Druggable Genome, Secreted Protein

**Protein Pathways:**

Allograft rejection, Cytokine-cytokine receptor interaction, Graft-versus-host disease, Jak-STAT signaling pathway, Natural killer cell mediated cytotoxicity, Proteasome, Regulation of autophagy, Systemic lupus erythematosus, T cell receptor signaling pathway, TGF-beta signaling pathway, Type I diabetes mellitus

**Product images:**


Promyelocytic leukemia (PML) colocalized with endogenous tripartite motif-containing protein 22 (TRIM22) in Hep-2 cells treated with IFN-gamma. Hep-2 cells were incubated with IFN-gamma (OriGene [TP721239]) (150 U/ml) or with the vehicle for 48 hours and analyzed by immunofluorescence with anti-TRIM22 mouse monoclonal antibody and anti-PML rabbit polyclonal antibody. Insets show enlarged views of the areas indicated by the white squares. DIC is the differential interference contrast image. Figure cited from Front Immunol, PMID: 28555140