

Product datasheet for **TP701406**

Inhibin beta A (INHBA) (NM_002192) Human Recombinant Protein

Product data:

Product Type:	Recombinant Proteins
Description:	Purified recombinant protein of Human inhibin, beta A (INHBA), Gly311-end, tag free, secretory expressed in CHO cells, 10ug
Species:	Human
Expression Host:	CHO
Expression cDNA Clone or AA Sequence:	A DNA sequence from TrueORF clone, RC203226, encoding the region Gly311-end of INHBA
Tag:	Tag Free
Predicted MW:	13.0 kDa
Concentration:	>50 ug/mL as determined by microplate BCA method
Purity:	> 80% as determined by SDS-PAGE and Coomassie blue staining
Buffer:	Lyophilized from a 0.2 µm filtered solution of 4mM Hcl with trehalose as protectant.
Bioactivity:	Measured by its ability to induce hemoglobin expression in K562 human chronic myelogenous leukemia cells. The ED50 for this effect is 1.84-5.53 ng/mL.
Storage:	Store at -20°C after receiving vials.
Stability:	Stable for at least 1 year from receipt of products under proper storage and handling conditions. Avoid repeated freeze-thaw cycles.
RefSeq:	NP_002183
Locus ID:	3624
UniProt ID:	P08476 , A4D1W7
RefSeq Size:	2175
Cytogenetics:	7p14.1
RefSeq ORF:	1278
Synonyms:	EDF; FRP



[View online »](#)

Summary:

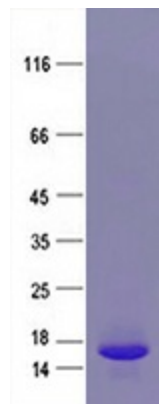
This gene encodes a member of the TGF-beta (transforming growth factor-beta) superfamily of proteins. The encoded preproprotein is proteolytically processed to generate a subunit of the dimeric activin and inhibin protein complexes. These complexes activate and inhibit, respectively, follicle stimulating hormone secretion from the pituitary gland. The encoded protein also plays a role in eye, tooth and testis development. Elevated expression of this gene may be associated with cancer cachexia in human patients. [provided by RefSeq, Aug 2016]

Protein Families:

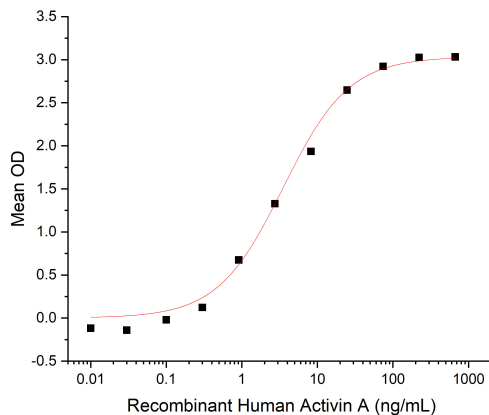
Druggable Genome, Secreted Protein

Protein Pathways:

Cytokine-cytokine receptor interaction, TGF-beta signaling pathway

Product images:


Coomassie blue staining of purified Activin A protein (Cat #TP701406). The protein was produced from CHO.



Measured by its ability to induce hemoglobin expression in K562 human chronic myelogenous leukemia cells. The ED50 for this effect is 1.84-5.53 ng/mL.