

Product datasheet for **TP701239**

CD48 (NM_001778) Human Recombinant Protein

Product data:

Product Type:	Recombinant Proteins
Description:	Purified recombinant protein of Human Human CD48 molecule (CD48), Met1-Ser220, with C-terminal His tag, secretory expressed in HEK293 cells, 50ug
Species:	Human
Expression Host:	HEK293T
Expression cDNA Clone or AA Sequence:	A DNA sequence from TrueORF clone, RC204849, encoding the region Met1-Ser220 of CD48
Tag:	C-HIS
Predicted MW:	22.98 kDa
Concentration:	>0.05 µg/µL as determined by microplate Bradford method
Purity:	> 80% as determined by SDS-PAGE and Coomassie blue staining
Buffer:	PBS, pH 7.4, 10% glycerol
Note:	For testing in cell culture applications, please filter before use. Note that you may experience some loss of protein during the filtration process.
Storage:	Store at -80°C after receiving vials.
Stability:	Stable for 12 months from the date of receipt of the product under proper storage and handling conditions. Avoid repeated freeze-thaw cycles.
RefSeq:	NP_001769
Locus ID:	962
UniProt ID:	P09326
RefSeq Size:	1155
Cytogenetics:	1q23.3
RefSeq ORF:	729
Synonyms:	BCM1; BLAST; BLAST1; hCD48; mCD48; MEM-102; SLAMF2



[View online »](#)

Summary:

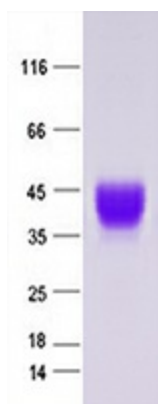
This gene encodes a member of the CD2 subfamily of immunoglobulin-like receptors which includes SLAM (signaling lymphocyte activation molecules) proteins. The encoded protein is found on the surface of lymphocytes and other immune cells, dendritic cells and endothelial cells, and participates in activation and differentiation pathways in these cells. The encoded protein does not have a transmembrane domain, however, but is held at the cell surface by a GPI anchor via a C-terminal domain which maybe cleaved to yield a soluble form of the receptor. Multiple transcript variants encoding different isoforms have been found for this gene. [provided by RefSeq, Dec 2011]

Protein Families:

Druggable Genome, Transmembrane

Protein Pathways:

Natural killer cell mediated cytotoxicity

Product images:

Purified recombinant protein CD48 was analyzed by SDS-PAGE gel and Coomossie Blue Staining.