

Product datasheet for **TP701235**

PAI1 (SERPINE1) (NM_000602) Human Recombinant Protein

Product data:

Product Type:	Recombinant Proteins
Description:	Purified recombinant protein of Human serpin peptidase inhibitor, clade E (nexin, plasminogen activator inhibitor type 1), member 1 (SERPINE1), full length, with C-terminal His tag, secretory expressed in HEK293 cells, 50ug
Species:	Human
Expression Host:	HEK293T
Expression cDNA Clone or AA Sequence:	A DNA sequence from TrueORF clone, RC202085, encoding the full-length of SERPINE1
Tag:	C-HIS
Predicted MW:	43.58 kDa
Concentration:	>0.05 µg/µL as determined by microplate Bradford method
Purity:	> 80% as determined by SDS-PAGE and Coomassie blue staining
Buffer:	PBS, pH 7.4, 10% glycerol
Note:	For testing in cell culture applications, please filter before use. Note that you may experience some loss of protein during the filtration process.
Storage:	Store at -80°C after receiving vials.
Stability:	Stable for 12 months from the date of receipt of the product under proper storage and handling conditions. Avoid repeated freeze-thaw cycles.
RefSeq:	NP_000593
Locus ID:	5054
UniProt ID:	P05121 , A0A024QYT5
RefSeq Size:	3207
Cytogenetics:	7q22.1
RefSeq ORF:	1206
Synonyms:	PAI; PAI-1; PAI1; PLANH1



[View online »](#)

Summary:

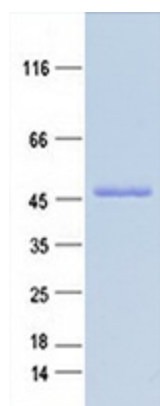
This gene encodes a member of the serine proteinase inhibitor (serpin) superfamily. This member is the principal inhibitor of tissue plasminogen activator (tPA) and urokinase (uPA), and hence is an inhibitor of fibrinolysis. The protein also functions as a component of innate antiviral immunity. Defects in this gene are the cause of plasminogen activator inhibitor-1 deficiency (PAI-1 deficiency), and high concentrations of the gene product are associated with thrombophilia. [provided by RefSeq, Aug 2020]

Protein Families:

Druggable Genome, Secreted Protein

Protein Pathways:

Complement and coagulation cascades, p53 signaling pathway

Product images:

Purified recombinant protein SERPINE1 was analyzed by SDS-PAGE gel and Coomassie Blue Staining.