

Product datasheet for **TP701141**

IL6 Mutant (R44M) Human Recombinant Protein

Product data:

Product Type:	Mutant Proteins
Description:	Purified mutant recombinant protein of Human interleukin 6 (interferon, beta 2) (IL6) mutation at R44M)
Species:	Human
Expression Host:	HEK293T
Expression cDNA Clone or AA Sequence:	A DNA sequence from TrueORF clone, RC202078, encoding the full-length of IL6(R44M)
Tag:	Myc-DDK
Predicted MW:	23.7 kDa
Concentration:	>0.05 µg/µL as determined by microplate Bradford method
Purity:	> 80% as determined by SDS-PAGE and Coomassie blue staining
Buffer:	25 mM Tris-HCl, 100 mM glycine, pH 7.3, 10% glycerol
Note:	For culture applications, please filter before use. Note that you may experience some loss of protein during the filtration process.
Storage:	Store at -80°C after receiving vials.
Stability:	Stable for at least 12 months from receipt of products under proper storage and handling conditions. Avoid repeated freeze-thaw cycles.
RefSeq:	NP_000591.1
Locus ID:	3569
RefSeq Size:	1201
Cytogenetics:	7p15.3
RefSeq ORF:	636
Synonyms:	BSF-2; BSF2; CDF; HGF; HSF; IFN-beta-2; IFNB2; IL-6



[View online »](#)

Summary:

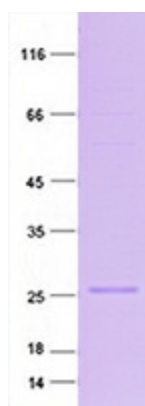
This gene encodes a cytokine that functions in inflammation and the maturation of B cells. In addition, the encoded protein has been shown to be an endogenous pyrogen capable of inducing fever in people with autoimmune diseases or infections. The protein is primarily produced at sites of acute and chronic inflammation, where it is secreted into the serum and induces a transcriptional inflammatory response through interleukin 6 receptor, alpha. The functioning of this gene is implicated in a wide variety of inflammation-associated disease states, including susceptibility to diabetes mellitus and systemic juvenile rheumatoid arthritis. Elevated levels of the encoded protein have been found in virus infections, including COVID-19 (disease caused by SARS-CoV-2). [provided by RefSeq, Aug 2020]

Protein Families:

Druggable Genome, Secreted Protein

Protein Pathways:

Cytokine-cytokine receptor interaction, Cytosolic DNA-sensing pathway, Graft-versus-host disease, Hematopoietic cell lineage, Hypertrophic cardiomyopathy (HCM), Jak-STAT signaling pathway, NOD-like receptor signaling pathway, Pathways in cancer, Prion diseases, Toll-like receptor signaling pathway

Product images:

Purified recombinant protein IL6 (R44M) was analyzed by SDS-PAGE gel and Coomassie Blue Staining.