

Product datasheet for **TP701137**

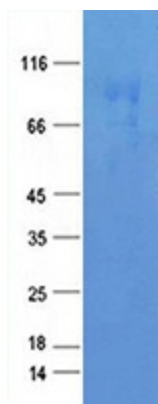
LRRC8 (R262W)

Product data:

Product Type:	Mutant Proteins
Description:	Purified mutant recombinant protein of Human SH2B adaptor protein 3 (SH2B3) mutation at R262W
Species:	Human
Expression Host:	HEK293T
Expression cDNA Clone or AA Sequence:	A DNA sequence from TrueORF clone, RC209127, encoding the full-length of FOXL2(C134W)
Tag:	Myc-DDK
Predicted MW:	94.2 kDa
Concentration:	>0.05 µg/µL as determined by microplate Bradford method
Purity:	> 80% as determined by SDS-PAGE and Coomassie blue staining
Buffer:	25 mM Tris-HCl, 100 mM glycine, pH 7.3, 10% glycerol
Note:	For culture applications, please filter before use. Note that you may experience some loss of protein during the filtration process.
Storage:	Store at -80°C after receiving vials.
Stability:	Stable for at least 12 months from receipt of products under proper storage and handling conditions. Avoid repeated freeze-thaw cycles.



[View online »](#)

Product images:

Purified recombinant protein LRRC8 (R262W) was analyzed by SDS-PAGE gel and Coomassie Blue Staining.