

Product datasheet for **TP701112**

CLCA1 (NM_001285) Human Recombinant Protein

Product data:

Product Type:	Recombinant Proteins
Description:	Purified recombinant protein of Human chloride channel accessory 1 (CLCA1), Asn22-End, with C-terminal His tag, secretory expressed in HEK293 cells, 50 ug
Species:	Human
Expression Host:	HEK293T
Expression cDNA Clone or AA Sequence:	A DNA sequence from TrueORF clone, RC218583, encoding the region Asn22-End of CLCA1
Tag:	C-HIS
Predicted MW:	99.3KDa
Concentration:	>0.05 µg/µL as determined by microplate BCA method
Purity:	> 80% as determined by SDS-PAGE and Coomassie blue staining
Buffer:	PBS, pH 7.4, 10% glycerol
Note:	For testing in cell culture applications, please filter before use. Note that you may experience some loss of protein during the filtration process.
Storage:	Store at -80°C.
Stability:	Stable for 12 months from the date of receipt of the product under proper storage and handling conditions. Avoid repeated freeze-thaw cycles.
RefSeq:	NP_001276
Locus ID:	1179
UniProt ID:	A8K7I4
RefSeq Size:	3311
Cytogenetics:	1p22.3
RefSeq ORF:	2742
Synonyms:	CACC; CaCC-1; CACC1; CLCRG1; GOB5; hCaCC-1; hCLCA1



[View online »](#)

Summary:

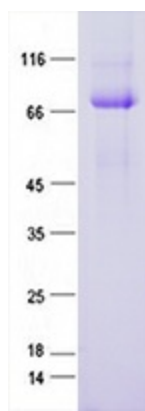
This gene encodes a member of the calcium sensitive chloride conductance protein family. To date, all members of this gene family map to the same region on chromosome 1p31-p22 and share a high degree of homology in size, sequence, and predicted structure, but differ significantly in their tissue distributions. The encoded protein is expressed as a precursor protein that is processed into two cell-surface-associated subunits, although the site at which the precursor is cleaved has not been precisely determined. The encoded protein may be involved in mediating calcium-activated chloride conductance in the intestine. [provided by RefSeq, Jul 2008]

Protein Families:

Druggable Genome, Ion Channels: Other

Protein Pathways:

Olfactory transduction

Product images:

Purified recombinant protein CLCA1 was analyzed by SDS-PAGE gel and Coomassie Blue Staining.