

## Product datasheet for **TP701110**

### **C1QL3 (NM\_001010908) Human Recombinant Protein**

#### **Product data:**

<b>Product Type:</b>	Recombinant Proteins
<b>Description:</b>	Purified recombinant protein of Human complement component 1, q subcomponent-like 3 (C1QL3), His21-End, with C-terminal His tag, secretory expressed in HEK293 cells, 50 ug
<b>Species:</b>	Human
<b>Expression Host:</b>	HEK293T
<b>Expression cDNA Clone or AA Sequence:</b>	A DNA sequence from TrueORF clone, RC223500, encoding the region His21-End of C1QL3
<b>Tag:</b>	C-HIS
<b>Predicted MW:</b>	26.0KDa
<b>Concentration:</b>	>0.05 µg/µL as determined by microplate BCA method
<b>Purity:</b>	> 80% as determined by SDS-PAGE and Coomassie blue staining
<b>Buffer:</b>	PBS, pH 7.4, 10% glycerol
<b>Note:</b>	For testing in cell culture applications, please filter before use. Note that you may experience some loss of protein during the filtration process.
<b>Storage:</b>	Store at -80°C.
<b>Stability:</b>	Stable for 12 months from the date of receipt of the product under proper storage and handling conditions. Avoid repeated freeze-thaw cycles.
<b>RefSeq:</b>	<a href="#">NP_001010908</a>
<b>Locus ID:</b>	389941
<b>UniProt ID:</b>	<a href="#">Q5VWW1</a> , <a href="#">A0A3B0J0F3</a>
<b>RefSeq Size:</b>	2493
<b>Cytogenetics:</b>	10p13
<b>RefSeq ORF:</b>	765
<b>Synonyms:</b>	C1ql; C1QTNF13; CTRP13; K100



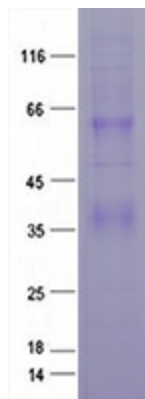
[View online »](#)

**Summary:**

May regulate the number of excitatory synapses that are formed on hippocampus neurons. Has no effect on inhibitory synapses (By similarity). Plays a role in glucose homeostasis. Via AMPK signaling pathway, stimulates glucose uptake in adipocytes, myotubes and hepatocytes and enhances insulin-stimulated glucose uptake. In a hepatoma cell line, reduces the expression of gluconeogenic enzymes G6PC and PCK1 and hence decreases de novo glucose production (By similarity).[UniProtKB/Swiss-Prot Function]

**Protein Families:**

Secreted Protein

**Product images:**

Purified recombinant protein C1QL3 was analyzed by SDS-PAGE gel and Coomassie Blue Staining.