

Product datasheet for **TP701108**

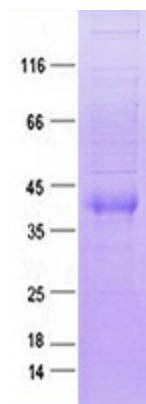
CREG2 (NM_153836) Human Recombinant Protein

Product data:

Product Type:	Recombinant Proteins
Description:	Purified recombinant protein of Human cellular repressor of E1A-stimulated genes 2 (CREG2), Tyr32-End, with C-terminal His tag, secretory expressed in HEK293 cells, 50 ug
Species:	Human
Expression Host:	HEK293T
Expression cDNA Clone or AA Sequence:	A DNA sequence from TrueORF clone, RC207985, encoding the region Tyr32-End of CREG2
Tag:	C-HIS
Predicted MW:	30.1KDa
Concentration:	>0.05 µg/µL as determined by microplate BCA method
Purity:	> 80% as determined by SDS-PAGE and Coomassie blue staining
Buffer:	PBS, pH 7.4, 10% glycerol
Note:	For testing in cell culture applications, please filter before use. Note that you may experience some loss of protein during the filtration process.
Storage:	Store at -80°C.
Stability:	Stable for 12 months from the date of receipt of the product under proper storage and handling conditions. Avoid repeated freeze-thaw cycles.
RefSeq:	NP_722578
Locus ID:	200407
UniProt ID:	Q8IUH2
RefSeq Size:	3201
Cytogenetics:	2q11.2
RefSeq ORF:	870
Protein Families:	Secreted Protein



[View online »](#)

Product images:

Purified recombinant protein CREG2 was analyzed by SDS-PAGE gel and Coomassie Blue Staining.