

Product datasheet for **TP701106**

AMELX (NM_182681) Human Recombinant Protein

Product data:

Product Type:	Recombinant Proteins
Description:	Purified recombinant protein of Human amelogenin, X-linked (AMELX), Met17-End, with C-terminal His tag, secretory expressed in HEK293 cells, 50ug
Species:	Human
Expression Host:	HEK293T
Expression cDNA Clone or AA Sequence:	A DNA sequence from TrueORF clone, RC215005, encoding the region Met17-End of AMELX
Tag:	C-HIS
Predicted MW:	19.4kDa
Concentration:	>0.05 µg/µL as determined by microplate BCA method
Purity:	> 80% as determined by SDS-PAGE and Coomassie blue staining
Buffer:	PBS, pH 7.4, 300 mM imidazole, 10% glycerol
Note:	For testing in cell culture applications, please filter before use. Note that you may experience some loss of protein during the filtration process.
Storage:	Store at -80°C.
Stability:	Stable for 12 months from the date of receipt of the product under proper storage and handling conditions. Avoid repeated freeze-thaw cycles.
RefSeq:	NP_872622
Locus ID:	265
UniProt ID:	Q99217
RefSeq Size:	745
Cytogenetics:	Xp22.2
RefSeq ORF:	525
Synonyms:	A11E; AIH1; ALGN; AMG; AMGL; AMGX



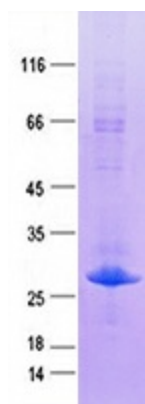
[View online »](#)

Summary:

This gene encodes a member of the amelogenin family of extracellular matrix proteins. Amelogenins are involved in biomineralization during tooth enamel development. Mutations in this gene cause X-linked amelogenesis imperfecta. Alternative splicing results in multiple transcript variants encoding different isoforms. [provided by RefSeq, Jul 2008]

Protein Families:

Druggable Genome, Secreted Protein, Transmembrane

Product images:

Purified recombinant protein AMELX was analyzed by SDS-PAGE gel and Coomassie Blue Staining.