

Product datasheet for **TP701105**

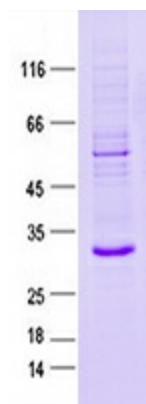
C1QL1 (NM_006688) Human Recombinant Protein

Product data:

Product Type:	Recombinant Proteins
Description:	Purified recombinant protein of Human complement component 1, q subcomponent-like 1 (C1QL1), Gly17-End, with C-terminal His tag, secretory expressed in HEK293 cells, 50ug
Species:	Human
Expression Host:	HEK293T
Expression cDNA Clone or AA Sequence:	A DNA sequence from TrueORF clone, RC201176, encoding the region Gly17-End of C1QL1
Tag:	C-HIS
Predicted MW:	26.1kDa
Concentration:	>0.05 µg/µL as determined by microplate BCA method
Purity:	> 80% as determined by SDS-PAGE and Coomassie blue staining
Buffer:	PBS, pH 7.4, 10% glycerol
Note:	For testing in cell culture applications, please filter before use. Note that you may experience some loss of protein during the filtration process.
Storage:	Store at -80°C.
Stability:	Stable for 12 months from the date of receipt of the product under proper storage and handling conditions. Avoid repeated freeze-thaw cycles.
RefSeq:	NP_006679
Locus ID:	10882
UniProt ID:	O75973
RefSeq Size:	1517
Cytogenetics:	17q21.31
RefSeq ORF:	774
Synonyms:	C1QRF; C1QTNF14; CRF; CTRP14
Summary:	May regulate the number of excitatory synapses that are formed on hippocampus neurons. Has no effect on inhibitory synapses (By similarity).[UniProtKB/Swiss-Prot Function]
Protein Families:	Secreted Protein



[View online »](#)

Product images:

Purified recombinant protein C1QL1 was analyzed by SDS-PAGE gel and Coomassie Blue Staining.