

Product datasheet for **TP701097**

C20orf114 (BPIFB1) (NM_033197) Human Recombinant Protein

Product data:

Product Type:	Recombinant Proteins
Description:	Purified recombinant protein of Human chromosome 20 open reading frame 114 (C20orf114), Thr22-End, with C-terminal His tag, secretory expressed in HEK293 cells, 50 ug
Species:	Human
Expression Host:	HEK293T
Expression cDNA Clone or AA Sequence:	A DNA sequence from TrueORF clone, RC203281, encoding the region Thr22-End of BPIFB1
Tag:	C-HIS
Predicted MW:	51.5kDa
Concentration:	>0.05 µg/µL as determined by microplate BCA method
Purity:	> 80% as determined by SDS-PAGE and Coomassie blue staining
Buffer:	PBS, pH 7.4, 10% glycerol
Note:	For testing in cell culture applications, please filter before use. Note that you may experience some loss of protein during the filtration process.
Storage:	Store at -80°C.
Stability:	Stable for 12 months from the date of receipt of the product under proper storage and handling conditions. Avoid repeated freeze-thaw cycles.
RefSeq:	NP_149974
Locus ID:	92747
UniProt ID:	Q8TDL5
RefSeq Size:	1734
Cytogenetics:	20q11.21
RefSeq ORF:	1452
Synonyms:	C20orf114; LPLUNC1

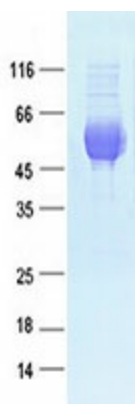


[View online »](#)

Summary: The protein encoded by this gene may be involved in the innate immune response to bacterial exposure in the mouth, nasal cavities, and lungs. The encoded protein is secreted and is a member of the BPI/LBP/PLUNC protein superfamily. This gene is found with other members of the superfamily in a cluster on chromosome 20. [provided by RefSeq, Jul 2008]

Protein Families: Druggable Genome, Secreted Protein, Transmembrane

Product images:



Purified recombinant protein BPIFB1 was analyzed by SDS-PAGE gel and Coomassie Blue Staining.