

## Product datasheet for **TP701096**

### PRB4 (NM\_002723) Human Recombinant Protein

#### Product data:

Product Type:	Recombinant Proteins
Description:	Purified recombinant protein of Human proline-rich protein BstNI subfamily 4 (PRB4), Glu17-End, with C-terminal His tag, secretory expressed in HEK293 cells, 50 ug
Species:	Human
Expression Host:	HEK293T
Expression cDNA Clone or AA Sequence:	A DNA sequence from TrueORF clone, RC219660, encoding the region Glu17-End of PRB4
Tag:	C-HIS
Predicted MW:	24.7kDa
Concentration:	>0.05 µg/µL as determined by microplate BCA method
Purity:	> 80% as determined by SDS-PAGE and Coomassie blue staining
Buffer:	PBS, pH 7.4, 10% glycerol
Note:	For testing in cell culture applications, please filter before use. Note that you may experience some loss of protein during the filtration process.
Storage:	Store at -80°C.
Stability:	Stable for 12 months from the date of receipt of the product under proper storage and handling conditions. Avoid repeated freeze-thaw cycles.
RefSeq:	<a href="#">NP_002714</a>
Locus ID:	5545
UniProt ID:	<a href="#">E9PAL0</a>
RefSeq Size:	944
Cytogenetics:	12p13.2
RefSeq ORF:	741
Synonyms:	Po



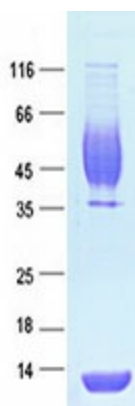
[View online »](#)

**Summary:**

This gene encodes a member of the heterogeneous family of basic, proline-rich, human salivary glycoproteins. The encoded preproprotein undergoes proteolytic processing to generate one or more mature peptides before secretion from the parotid glands. Multiple alleles of this gene exhibiting variations in the length of the tandem repeats have been identified. The reference genome encodes the "Small" allele. This gene is located in a cluster of closely related salivary proline-rich proteins on chromosome 12. Alternative splicing results in multiple transcript variants encoding different isoforms that may undergo similar proteolytic processing. [provided by RefSeq, Nov 2015]

**Protein Families:**

Druggable Genome

**Product images:**

Purified recombinant protein PRB4 was analyzed by SDS-PAGE gel and Coomassie Blue Staining.