

Product datasheet for **TP701095**

APELA (NM_001297550) Human Recombinant Protein

Product data:

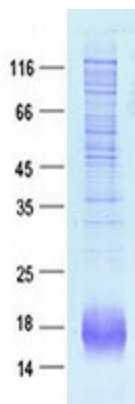
Product Type:	Recombinant Proteins
Description:	Purified recombinant protein of Human apelin receptor early endogenous ligand (APELA), Gln23-End, with C-terminal His tag, secretory expressed in HEK293 cells, 50 ug
Species:	Human
Expression Host:	HEK293T
Expression cDNA Clone or AA Sequence:	A DNA sequence from TrueORF clone, RC235418, encoding the region Gln23-End of APELA
Tag:	C-HIS
Predicted MW:	5.3kDa
Concentration:	>0.05 µg/µL as determined by microplate BCA method
Purity:	> 80% as determined by SDS-PAGE and Coomassie blue staining
Buffer:	PBS, pH 7.4, 10% glycerol
Note:	For testing in cell culture applications, please filter before use. Note that you may experience some loss of protein during the filtration process.
Storage:	Store at -80°C.
Stability:	Stable for 12 months from the date of receipt of the product under proper storage and handling conditions. Avoid repeated freeze-thaw cycles.
RefSeq:	NP_001284479
Locus ID:	100506013
UniProt ID:	P0DMC3 , X5D2P3
RefSeq Size:	2622
Cytogenetics:	4q32.3
RefSeq ORF:	162
Synonyms:	ELA; Ende; tdl



[View online »](#)

Summary:

This gene encodes a peptide hormone that binds to the Apelin receptor. The encoded protein is required for heart development in zebrafish and has been shown to maintain self-renewal of human embryonic stem cells through activation of the PI3K/AKT pathway. Experiments in human and mouse cell lines point to additional roles for the encoded protein in angiogenesis and regulation of vascular tone. [provided by RefSeq, Jul 2016]

Product images:

Purified recombinant protein APELA was analyzed by SDS-PAGE gel and Coomassie Blue Staining.