

Product datasheet for **TP701090**

WFDC12 (NM_080869) Human Recombinant Protein

Product data:

Product Type:	Recombinant Proteins
Description:	Purified recombinant protein of Human WAP four-disulfide core domain 12 (WFDC12), Val24-end, with C-terminal His tag, secretory expressed in HEK293 cells, 50ug
Species:	Human
Expression Host:	HEK293T
Expression cDNA Clone or AA Sequence:	A DNA sequence from TrueORF clone, RC222584, encoding the region Val24-end of WFDC12
Tag:	C-HIS
Predicted MW:	11kDa
Concentration:	>0.05 µg/µL as determined by microplate BCA method
Purity:	> 80% as determined by SDS-PAGE and Coomassie blue staining
Buffer:	PBS, pH 7.4, 10% glycerol
Note:	For testing in cell culture applications, please filter before use. Note that you may experience some loss of protein during the filtration process.
Storage:	Store at -80°C.
Stability:	Stable for 12 months from the date of receipt of the product under proper storage and handling conditions. Avoid repeated freeze-thaw cycles.
RefSeq:	NP_543145
Locus ID:	128488
UniProt ID:	Q8WWY7
RefSeq Size:	774
Cytogenetics:	20q13.12
RefSeq ORF:	333
Synonyms:	C20orf122; dj211D12.4; SWAM2; WAP2



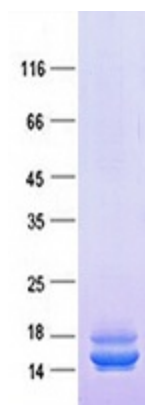
[View online »](#)

Summary:

This gene encodes a member of the WAP-type four-disulfide core (WFDC) domain family. The WFDC domain, or WAP signature motif, contains eight cysteines forming four disulfide bonds at the core of the protein, and functions as a protease inhibitor. Most WFDC gene members are localized to chromosome 20q12-q13 in two clusters: centromeric and telomeric. This gene belongs to the centromeric cluster. [provided by RefSeq, Jul 2008]

Protein Families:

Secreted Protein

Product images:

Purified recombinant protein WFDC12 was analyzed by SDS-PAGE gel and Coomassie Blue Staining.