

## Product datasheet for **TP701085**

### FSH beta (FSHB) (NM\_001018080) Human Recombinant Protein

#### Product data:

Product Type:	Recombinant Proteins
Description:	Purified recombinant protein of Human follicle stimulating hormone, beta polypeptide (FSHB), transcript variant 2, Asn19-end, with C-terminal His tag, secretory expressed in HEK293 cells, 50ug
Species:	Human
Expression Host:	HEK293T
Expression cDNA Clone or AA Sequence:	A DNA sequence from TrueORF clone, RC214616, encoding the region Asn19-end of FSHB
Tag:	C-HIS
Predicted MW:	13.8kDa
Concentration:	>0.05 µg/µL as determined by microplate BCA method
Purity:	> 80% as determined by SDS-PAGE and Coomassie blue staining
Buffer:	PBS, pH 7.4, 10% glycerol
Note:	For testing in cell culture applications, please filter before use. Note that you may experience some loss of protein during the filtration process.
Storage:	Store at -80°C.
Stability:	Stable for 12 months from the date of receipt of the product under proper storage and handling conditions. Avoid repeated freeze-thaw cycles.
RefSeq:	<a href="#">NP_001018090</a>
Locus ID:	2488
UniProt ID:	<a href="#">P01225</a> , <a href="#">A0A0F7RQE8</a>
RefSeq Size:	1906
Cytogenetics:	11p14.1
RefSeq ORF:	387
Synonyms:	HH24


[View online »](#)

**Summary:**

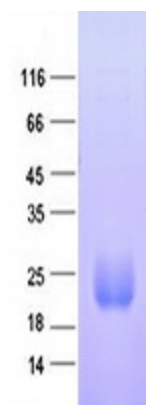
The pituitary glycoprotein hormone family includes follicle-stimulating hormone, luteinizing hormone, chorionic gonadotropin, and thyroid-stimulating hormone. All of these glycoproteins consist of an identical alpha subunit and a hormone-specific beta subunit. This gene encodes the beta subunit of follicle-stimulating hormone. In conjunction with luteinizing hormone, follicle-stimulating hormone induces egg and sperm production. Alternative splicing results in two transcript variants encoding the same protein. [provided by RefSeq, Jul 2008]

**Protein Families:**

Druggable Genome, Secreted Protein

**Protein Pathways:**

GnRH signaling pathway, Neuroactive ligand-receptor interaction

**Product images:**


Purified recombinant protein FSHB was analyzed by SDS-PAGE gel and Coomossie Blue Staining.