

## Product datasheet for **TP701080**

### Complement C4A (C4A) (NM\_007293) Human Recombinant Protein

#### Product data:

|                                       |  |
|---------------------------------------|--|
| Product Type:                         | Recombinant Proteins   |
| Description:                          | Purified recombinant protein of Human complement component 4A (Rodgers blood group) (C4A), Lys20-End, with C-terminal His tag, secretory expressed in HEK293 cells, 50ug |
| Species:                              | Human  |
| Expression Host:                      | HEK293T  |
| Expression cDNA Clone or AA Sequence: | A DNA sequence from TrueORF clone, RC215339, encoding the region(Lys20-End) of C4A   |
| Tag:                                  | C-HIS  |
| Predicted MW:                         | 191.8 kDa  |
| Concentration:                        | >0.05 µg/µL as determined by microplate BCA method   |
| Purity:                               | > 80% as determined by SDS-PAGE and Coomassie blue staining  |
| Buffer:                               | PBS, pH 7.4, 10% glycerol  |
| Note:                                 | For testing in cell culture applications, please filter before use. Note that you may experience some loss of protein during the filtration process.                     |
| Storage:                              | Store at -80°C.  |
| Stability:                            | Stable for 12 months from the date of receipt of the product under proper storage and handling conditions. Avoid repeated freeze-thaw cycles.                            |
| RefSeq:                               | <a href="#">NP_009224</a>  |
| Locus ID:                             | 720  |
| UniProt ID:                           | <a href="#">P0C0L4</a>   |
| RefSeq Size:                          | 5426   |
| Cytogenetics:                         | 6p21.33  |
| RefSeq ORF:                           | 5232   |
| Synonyms:                             | C4; C4A2; C4A3; C4A4; C4A6; C4AD; C4S; CO4; CPAMD2; RG   |



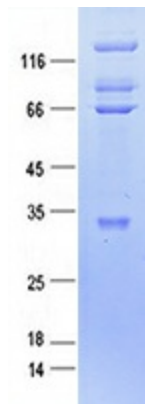
[View online »](#)

**Summary:**

This gene encodes the acidic form of complement factor 4, part of the classical activation pathway. The protein is expressed as a single chain precursor which is proteolytically cleaved into a trimer of alpha, beta, and gamma chains prior to secretion. The trimer provides a surface for interaction between the antigen-antibody complex and other complement components. The alpha chain is cleaved to release C4 anaphylatoxin, an antimicrobial peptide and a mediator of local inflammation. Deficiency of this protein is associated with systemic lupus erythematosus and type I diabetes mellitus. This gene localizes to the major histocompatibility complex (MHC) class III region on chromosome 6. Varying haplotypes of this gene cluster exist, such that individuals may have 1, 2, or 3 copies of this gene. Two transcript variants encoding different isoforms have been found for this gene. [provided by RefSeq, Nov 2014]

**Protein Pathways:**

Complement and coagulation cascades, Systemic lupus erythematosus

**Product images:**

Purified recombinant protein C4A was analyzed by SDS-PAGE gel and Coomassie Blue Staining.