

## Product datasheet for **TP701078**

### Von Willebrand Factor (VWF) (NM\_000552) Human Recombinant Protein

#### Product data:

Product Type:	Recombinant Proteins
Description:	Purified recombinant protein of Human von Willebrand factor (VWF), Ala23-End, with C-terminal His tag, secretory expressed in HEK293 cells, 50ug
Species:	Human
Expression Host:	HEK293T
Expression cDNA Clone or AA Sequence:	A DNA sequence from TrueORF clone, RC218497, encoding the region(Ala23-End) of VWF
Tag:	C-HIS
Predicted MW:	308.3 kDa
Concentration:	>0.05 µg/µL as determined by microplate BCA method
Purity:	> 80% as determined by SDS-PAGE and Coomassie blue staining
Buffer:	PBS, pH 7.4, 10% glycerol
Note:	For testing in cell culture applications, please filter before use. Note that you may experience some loss of protein during the filtration process.
Storage:	Store at -80°C.
Stability:	Stable for 12 months from the date of receipt of the product under proper storage and handling conditions. Avoid repeated freeze-thaw cycles.
RefSeq:	<a href="#">NP_000543</a>
Locus ID:	7450
UniProt ID:	<a href="#">P04275</a>
RefSeq Size:	8833
Cytogenetics:	12p13.31
RefSeq ORF:	8439
Synonyms:	F8VWF; VWD



[View online »](#)

**Summary:**

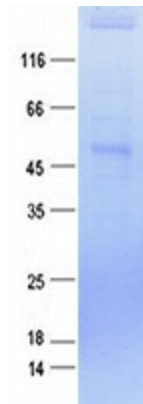
This gene encodes a glycoprotein involved in hemostasis. The encoded preproprotein is proteolytically processed following assembly into large multimeric complexes. These complexes function in the adhesion of platelets to sites of vascular injury and the transport of various proteins in the blood. Mutations in this gene result in von Willebrand disease, an inherited bleeding disorder. An unprocessed pseudogene has been found on chromosome 22. [provided by RefSeq, Oct 2015]

**Protein Families:**

Druggable Genome, Secreted Protein

**Protein Pathways:**

Complement and coagulation cascades, ECM-receptor interaction, Focal adhesion

**Product images:**

Purified recombinant protein VWF was analyzed by SDS-PAGE gel and Coomassie Blue Staining.