

Product datasheet for **TP701048**

PSP (REG1A) (NM_002909) Human Recombinant Protein

Product data:

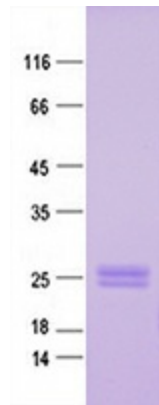
Product Type:	Recombinant Proteins
Description:	Purified recombinant protein of Human regenerating islet-derived 1 alpha (REG1A), full length, with C-terminal Myc-DDK tag, secretory expressed in HEK293 cells, 50ug
Species:	Human
Expression Host:	HEK293T
Expression cDNA Clone or AA Sequence:	A DNA sequence from TrueORF clone, RC202773, full length of of PSP
Tag:	Myc-DDK
Predicted MW:	18.7 kDa
Concentration:	>0.05 µg/µL as determined by microplate BCA method
Purity:	> 80% as determined by SDS-PAGE and Coomassie blue staining
Buffer:	PBS, pH 7.4, 10% glycerol
Note:	For testing in cell culture applications, please filter before use. Note that you may experience some loss of protein during the filtration process.
Storage:	Store at -80°C after receiving vials.
Stability:	Stable for 12 months from the date of receipt of the product under proper storage and handling conditions. Avoid repeated freeze-thaw cycles.
RefSeq:	NP_002900
Locus ID:	5967
UniProt ID:	P05451 , A8K7G6
RefSeq Size:	821
Cytogenetics:	2p12
RefSeq ORF:	498
Synonyms:	ICRF; P19; PSP; PSPS; PSPS1; PTP; REG



[View online »](#)

Summary:

This gene is a type I subclass member of the Reg gene family. The Reg gene family is a multigene family grouped into four subclasses, types I, II, III and IV, based on the primary structures of the encoded proteins. This gene encodes a protein that is secreted by the exocrine pancreas. It is associated with islet cell regeneration and diabetogenesis and may be involved in pancreatic lithogenesis. Reg family members REG1B, REGL, PAP and this gene are tandemly clustered on chromosome 2p12 and may have arisen from the same ancestral gene by gene duplication. [provided by RefSeq, Jul 2008]

Product images:

Purified recombinant protein REG1A was analyzed by SDS-PAGE gel and Coomassie Blue Staining.