

## Product datasheet for TP525567

### Ide (NM\_031156) Mouse Recombinant Protein

#### Product data:

Product Type:	Recombinant Proteins
Description:	Purified recombinant protein of Mouse insulin degrading enzyme (Ide), with C-terminal MYC/DDK tag, expressed in HEK293T cells, 20ug
Species:	Mouse
Expression Host:	HEK293T
Expression cDNA Clone or AA Sequence:	>MR225567 representing NM_031156 Red=Cloning site Green=Tags(s)

MRNGLVWLLHPALPGTLRSILGARPPPAKLLCGFPKQTYSTMSNPAIQRIEDQIVKSPEDKREYRGLELA  
 NGIKVLLISDPTTDKSSAALDVHIGSLSDPPNIPGLSHFCEHMLFLGTTKYPKENEYSQFLSEHAGSSNA  
 FTSGEHTNYYFDVSHEHLEGALDRFAQFFLCPLFDASCKDREVNAVSEHEKNVMNDAWRLFQLEKATGN  
 PKHPFSKFGTGNKYTLETRPNQEGIDVREELLKFHSTYSSNLMAICVLGRESLDDLTNLVVKLFSEVEN  
 KNVPLPEFPEHPFQEEHLRQLYKIVPIKDIRNLYVTFPIPDLQYYKSNPGHYLGHLIGHEGPGSLLSEL  
 KSKGWVNTLVGGQKEGARGFMFFIINVDLTEEGLLHVEDIILHMFQYIQLRAEGPQEWVFECKDLNAV  
 AFRFKDKERPRGYTSKIAGKLHYPLNGVLTAEYLLEEFRPDLIDMVLDKLRPENVRVAIVSKSFEGKTD  
 RTEQWYGTQYKQEAIPEDIIQKWQNADLNGKFKLPKNEFIPTNFEILSLEKDATPYPALIKDTAMSKLW  
 FKQDDKFFLPKACLNFEFFSPFAYVDPLHCNMAYLYLELLKDSLNEYAYAAELAGLSYDLQNTIYGMYS  
 VKGYNDKQPILLKKITEKMATFEIDKKRFEIIEAYMRSLNNFRAEQPHQHAMYLRLLMTEVAWTKDEL  
 KEALDDVTLPRLKAFIPQLLSRLHIEALLHGNITKQALGVMQMVEDTLIEHAHTKPLPSQLVRYREVQ  
 LPDRGWVYQQRNEVHNNCGIEIYYQTD MQSTSENMFLELFCQIIEPCFNTLRTKEQLGYIVFSGPRRA  
 NGIQGLRFIIQSEKPPHYLESRVEAFLITMEKAIEDMTEEFQKHIQALAIRRLDKPKKLSAECACYWGE  
 IISQQYNYDRDNIEVAYLKTTLTKDDIIRFYQEMLAVDAPRRHKVSVHVLAREMDSCPVVGEFSPQNDINL  
 SEAPPLPQPEVIHNMTEFKRGLPLFPLVKPHINFMAAKL

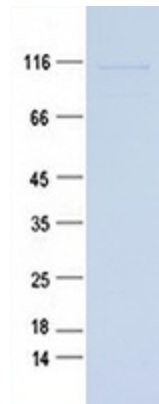
TRTRPLEQKLISEEDLAANDILDYKDDDDKV

Tag:	C-MYC/DDK
Predicted MW:	118.1 kDa
Concentration:	>0.05 µg/µL as determined by microplate BCA method
Purity:	> 80% as determined by SDS-PAGE and Coomassie blue staining
Buffer:	25 mM Tris-HCl, 100 mM glycine, pH 7.3, 10% glycerol



[View online »](#)

<b>Note:</b>	For testing in cell culture applications, please filter before use. Note that you may experience some loss of protein during the filtration process.
<b>Storage:</b>	Store at -80°C after receiving vials.
<b>Stability:</b>	Stable for 12 months from the date of receipt of the product under proper storage and handling conditions. Avoid repeated freeze-thaw cycles.
<b>RefSeq:</b>	<u>NP_112419</u>
<b>Locus ID:</b>	15925
<b>RefSeq Size:</b>	5087
<b>Cytogenetics:</b>	19 32.24 cM
<b>RefSeq ORF:</b>	3057
<b>Synonyms:</b>	1300012G03Rik; 4833415K22Rik; AA675336; AI507533

**Product images:**

Purified recombinant protein Ide was analyzed by SDS-PAGE gel and Coomassie Blue Staining.