

## Product datasheet for **TP525521**

### **Ltbp1 (NM\_019919) Mouse Recombinant Protein**

#### **Product data:**

**Product Type:** Recombinant Proteins

**Description:** Purified recombinant protein of Mouse latent transforming growth factor beta binding protein 1 (Ltbp1), 20µg

**Species:** Mouse

**Expression Host:** HEK293T



[View online »](#)

**Expression cDNA** >MR225521 representing NM\_019919  
**Clone or AA** **Red**=Cloning site **Green**=Tags(s)  
**Sequence:**

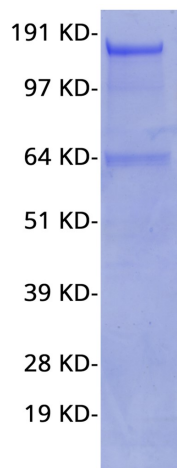
MAGAWLRWGLLLWAGLLAWSAHGRVRRITYVVRPGPLPAGALPLAGPPRTFNVALDARYSRSTAASSR  
ALAGPPAERTRRTSQPGGAALPGLRSPLPEPARPGGSPRQLHASKAGAQTAVTRFAKHGRQVRSQVQQD  
AQSAGGSRLQVQKQQLQGINVCGGQCCHGWSKPPGSRCTKPSCVPPCQNGGMCLRPQLCVCKPGSKGK  
ACEITAAQDTMPPAFGGQNPSSWAPLEQAAKHTSTKKADTLPRVSPVAQMTLTLKPKPSMGLSQIHPQ  
VAPLSSQNVMMIRHGQTQEYLLPKYFPAKVVSAEQSTEGSFLRYGQEQGTAPFQVSNHTGRIKVVFTP  
SICKVTCTKGNCQNSCQKGNNTTLISENGHAADTLTATNFRVVICHLPCMNGGQCSSRDKCQCPPNFTGK  
LCQIPVLGASMPKLYQHAQQGKALGSHVIHSTHTLPLTMTSQQGVKVFPPNIVNIHVHPPEASVQIH  
QVSRIDSPGGQKVKEAQPQGSQVSYQGLPVQKTQTVHSTYSHQQLIPHVYPVAAKTQLGRCFQETIGSQC  
GKALPGLSKQEDCCGTGVTGWSGFNKCQKCPKKQSYHGYTQMMECLQGYKRVNNTFCQDINECQLQGVCPN  
GECLNTMGSYRCSCKMGFGPDPTFSSCVPDPPVISEEKGPCYRLVSPGRHCMHPLSVHLTKQICCCSVGK  
AWGPHCEKCLPGTAAFKEICPGMGYTVSGVHRRRPIHQHIGKEAVYVPKNTPVAKSTHPPPLPAKE  
EPVEALTSSWEHGPRGAEPVVTAPPEKEIPSLDQEKTRLEPGQPQLSPGVSTIHLHPQFPVVEKTSPP  
VPVEVAPEASTSSASQVIAPTQVTEINECTVNPDICGAGHCINLPVRYTCICYEGYKFSEQLRKCVDDIDE  
CAQVRHLCSQGRCENTEGSFLCVCAPAGFMASEEGTNCIDVDECLRPDMCRDGRICINTAGAFRCEYCDSGY  
RMSRRGYCEDIDECLKPSTCPPEEQCVNTPGSYQCVPTGFRGWNGQCLDVDECLQPKVCTNGSCTNLEG  
SYMCSCHRGYSPTPDHRHCQDIDECQGNLCMNGQCRNTDGSFRCTCGQGYQLSAAKDQCEDIDECEHHH  
LCSHGQCRNTEGSFQVCVNQGYRASVLGDHCEINEDSSVCQGGDCINTAGSYDCTCPDGFQLNDNK  
GCQDINECAQPGLCGSHGECLNTQGSFHCVCEQGFISADGRTCEDIDECVNNTVCDSHGFCDNAGSFR  
CLCYQGFQAPQDQGQCVDVNECELLSGVCGEAFCEVVEGSFLCVCADENQEYSPMTGQCRSRVTEDSGVD  
RQPREEKKECYNNLDASLCDNVLAPNVTQKQCCCTSGAGWGDNCEIFPCPVQGTAEFTMCPRGKGLVP  
AGESSYDTGGENYKDADECLLFGEEICKNGYCLNTQPGYECYCKQGTYYDPVKLQCFDMDECQDPNSCID  
GQCVNTEGSYNCFCTHPMVLDASEKRCVQPTESNEQIEETDVYQDLCWEHLSEEYVCSRPLVGKQTTYTE  
CCCLYGEAWGMQCALCPMKDSDDYAQLCNIPVTGRRRPPYGRDALVDFSEQYGPETDPYFIQDRFLNSFEE  
LQAEECGILNGCENGRVVRVQEGYTCDCFDGYHLDMAKMTCDVDVNECSELNNRMSLCKNAKINTEGSYK  
CLCLPGYIPSDKPNYCTPLNSALNLDKESDLE

**TRTRPLEQKLISEEDLAANDILDYKDDDDKV**

**Tag:** C-MYC/DDK  
**Predicted MW:** 186.7 kDa  
**Concentration:** >0.05 µg/µL as determined by Bradford protein assay method.  
**Purity:** > 80% as determined by SDS-PAGE and Coomassie blue staining  
**Buffer:** 50mM Tris.HCl, pH7.5, 100mM glycine, 10% glycerol.  
**Storage:** Store at -80°C after receiving vials.  
**Stability:** Stable for 12 months from the date of receipt of the product under proper storage and handling conditions. Avoid repeated freeze-thaw cycles.  
**RefSeq:** [NP\\_064303.2](#)  
**Locus ID:** 268977

|               |  |
|---------------|--|
| UniProt ID:   | <a href="#">Q8CG19</a>   |
| RefSeq Size:  | 7455   |
| Cytogenetics: | 17 E2  |
| RefSeq ORF:   | 5136   |
| Synonyms:     | 9430031G15Rik; 9830146M04; b2b1000Clo; Ltbp-1; Ltbp1L; TGF-beta1-BP-1; Tgfb  |
| Summary:      | Key regulator of transforming growth factor beta (TGFB1, TGFB2 and TGFB3) that controls TGF-beta activation by maintaining it in a latent state during storage in extracellular space. Associates specifically via disulfide bonds with the Latency-associated peptide (LAP), which is the regulatory chain of TGF-beta, and regulates integrin-dependent activation of TGF-beta. Outcompeted by LRRC32/GARP for binding to LAP regulatory chain of TGF-beta.[UniProtKB/Swiss-Prot Function] |

### Product images:



Coomassie blue staining of purified Ltbp1 protein (Cat #TP525521). The protein was produced from mammalian cells transfected with Ltbp1 cDNA clone (Cat #[MR225521]).