

Product datasheet for TP524759

Mtdh (NM_026002) Mouse Recombinant Protein

Product data:

Product Type:	Recombinant Proteins
Description:	Purified recombinant protein of Mouse metadherin (Mtdh), with C-terminal MYC/DDK tag, expressed in HEK293T cells, 20ug
Species:	Mouse
Expression Host:	HEK293T
Expression cDNA	>MR224759 protein sequence
Clone or AA Sequence:	Red=Cloning site Green=Tags(s)

MAARSWQDELAQQAEEGSARLRELLSVGLGFLRTELGLDLGLEPKRYPGWVILVGTGALGLLLLFLLYG
WAAACAGARKRRRSPPRKREEAAPPTAPDDLAQLKCLRSEEQKKKNRKKLPEKPKPNGRTVEVPEDEVV
RNPRSITAKQAPETDKKNEKSKKNKKKSKSDAKAVQNSSRHDGKEVDEGAWETKISHREKRQQRKRDKVL
TDSGLDSTIPGIENIITVTTEQLTTASFPVGSKKNKGDShLNVQVSNFKSGKGDSTLQVSSRLNENLTV
NGGGWSEKSVKLSSQLSEEKWNVPPASAGKRKTEPSAWTQDTGDTNANGKDWGRNWSDRSIFSGIGSTA
EPVSQSTTSYQWDVSRNQPYIDDEWSGLNGLSSADPSSDWNAPAEWGNWVDEDRASLLKSQEPISNDQ
KVSDDDKEKGEALPTGKSKKKKKKKKQGEDNSHTQDTEDELEKDTREELPVNTSKARPKQEKACSLKTM
STSDPAEVLIKNSQPVKTLPPAISAEPSITLSKGDSDNSSSQVPPMLQDTPKPKSNAKQNSVPPSQTKE
TNWESPKQIKKKKKARRET

TRTRPLEQKLISEEDLAANDILDYKDDDDKV

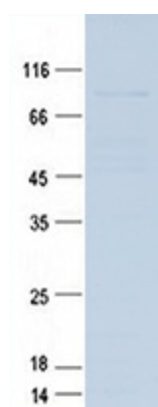
Tag:	C-MYC/DDK
Predicted MW:	63.8 kDa
Concentration:	>0.05 µg/µL as determined by microplate BCA method
Purity:	> 80% as determined by SDS-PAGE and Coomassie blue staining
Buffer:	25 mM Tris-HCl, 100 mM glycine, pH 7.3, 10% glycerol
Note:	For testing in cell culture applications, please filter before use. Note that you may experience some loss of protein during the filtration process.
Storage:	Store at -80°C after receiving vials.
Stability:	Stable for 12 months from the date of receipt of the product under proper storage and handling conditions. Avoid repeated freeze-thaw cycles.



[View online >](#)

RefSeq:	<u>NP_080278</u>
Locus ID:	67154
UniProt ID:	<u>Q80WJ7</u>
RefSeq Size:	3680
Cytogenetics:	15 13.98 cM
RefSeq ORF:	1740
Synonyms:	3D3; 3D3/Lyric; 2610103J23Rik; AEG-1; AV353288; D8Bwg1112e; Lyric
Summary:	Downregulates SLC1A2/EAAT2 promoter activity when expressed ectopically. Activates the nuclear factor kappa-B (NF-kappa-B) transcription factor. Promotes anchorage-independent growth of immortalized melanocytes and astrocytes which is a key component in tumor cell expansion. Promotes lung metastasis and also has an effect on bone and brain metastasis, possibly by enhancing the seeding of tumor cells to the target organ endothelium. Induces chemoresistance (By similarity).[UniProtKB/Swiss-Prot Function]

Product images:



Purified recombinant protein Mtdh was analyzed by SDS-PAGE gel and Coomossie Blue Staining.