

Product datasheet for **TP518826**

Gsdme (NM_018769) Mouse Recombinant Protein

Product data:

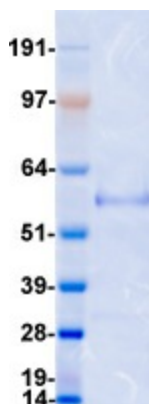
Product Type:	Recombinant Proteins
Description:	Purified recombinant protein of Mouse gasdermin E (Gsdme), with C-terminal MYC/DDK tag, expressed in HEK293T cells, 20ug
Species:	Mouse
Expression Host:	HEK293T
Expression cDNA Clone or AA Sequence:	>MR218826 protein sequence Red =Cloning site Green =Tags(s)
	<p>MFAKATRNFLKEVDAGGDLISVSHLNDSKQLLSLVTKKKRYWCWQRPKYQILSATLEDVLTEGHCLSP VVVESDFVKYESKCNHKSAGITVVGKVLNVGGKGVVESHSSFGTLRQEVQQLIQDAVKRTVNMD NLVLQQVLESRNEVLCVLTQKIMTTQKCVISEHVQSEETCGGMVGIQTKTIQVSATEDGTVTTDTNVLE IPAATTIAYGIMELFVKQDQGFEFCLLQGKHGGFEHERKLDVYLDPLAYREFAFDMPDGGQGISSQDG PLRVVKQATLHLERSFHPFAVLPAAQQRALFCVLQKILFDEELLRALEQVCDVAGGLWSSQAVLAMEEL TDSQQQDLTAFLQLVGYRIQGEHPGPQDEVSQKLFATAYFLVSALAEMPDPNATVFLGTCCCKLHVVISLC CLLHALSDDSVCDFHNPTLPLRDLTERFGIVQRLFASADIALERMQFSAKATILKDCIFLILHITLSG LSTLSKEHEEELCQSGHATGQD</p> <p>TRTRPLEQKLISEEDLAANDILDYKDDDDKV</p>
Tag:	C-MYC/DDK
Predicted MW:	56.6 kDa
Concentration:	>0.05 µg/µL as determined by microplate BCA method
Purity:	> 80% as determined by SDS-PAGE and Coomassie blue staining
Buffer:	25 mM Tris-HCl, 100 mM glycine, pH 7.3, 10% glycerol
Note:	For testing in cell culture applications, please filter before use. Note that you may experience some loss of protein during the filtration process.
Storage:	Store at -80°C after receiving vials.
Stability:	Stable for 12 months from the date of receipt of the product under proper storage and handling conditions. Avoid repeated freeze-thaw cycles.
RefSeq:	<u>NP_061239</u>



[View online »](#)

Locus ID:	54722
UniProt ID:	Q9Z2D3
RefSeq Size:	2133
Cytogenetics:	6 B2.3
RefSeq ORF:	1539
Synonyms:	2310037D07Rik; 4932441K13Rik; Dfna5h; EG14210; Fin15
Summary:	Plays a role in the TP53-regulated cellular response to DNA damage probably by cooperating with TP53.[UniProtKB/Swiss-Prot Function]

Product images:



Coomassie blue staining of purified Gsdme protein (Cat# TP518826). The protein was produced from HEK293T cells transfected with Gsdme cDNA clone (Cat# [MR218826]) using MegaTran 2.0 (Cat# [TT210002]).