

## Product datasheet for **TP515650**

### **Ltbp2 (NM\_013589) Mouse Recombinant Protein**

#### **Product data:**

Product Type:	Recombinant Proteins
Description:	Purified recombinant protein of Mouse latent transforming growth factor beta binding protein 2 (Ltbp2), 20µg
Species:	Mouse
Expression Host:	HEK293T



[View online »](#)

Expression cDNA >MR215650 protein sequence  
 Clone or AA Sequence: **Red**=Cloning site **Green**=Tags(s)

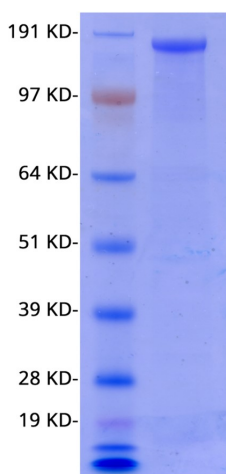
MESTSPRGLRCPQLCSHSGAMRAPTTARCSGCIRRVWRGFLPLVLAVLMGTSHAQRDSIGRYEPASRDA  
 NRLWHPVGSHPAAAAAKVYSLFREPDAPVPGLSPEWNPQAQGNPGRLEAEARRPRTQQLRRVQPPVQ  
 TRRSHPRGQQIAARAAPSVARLETQRPAAARRGRLTGRNVCGGQCCPGWTTSNSTNHCIKPVCPQC  
 NRGSCSRPQVCICRSGFRGARCEEVPEEEFDPQNARVPRRSVERAPGPHRSSEARGSLVTRIQLVPP  
 PSPPPSRRLSQPWPLQQHSGPSRTVRRYPATGANGQLMSNALPSGLELRDSSPQAAHVNHLSPPWGLNLT  
 EKIKKIKVFTPTICKQTCARGRCANSCEKGDTTTTLYSQGGHGHDPKSGFRIYFCQIPCLNGGRICGRDE  
 CWCPANSTGKFCHLPVPQPDREPAGRGRSRHRTLLEGPLKQSTFTLPLSNQLASVNPVSLVKVQIHHPPPEAS  
 VQIHQVARVRGELDPVLEDNSVETRASRRPHGNLGHSPWASNSIPARAGEAPRPPVLSRHYGLLGQCYL  
 STVNGQCANPLGELTSQEDCCGSVGTFWGVTSCAPCPPRPAFPVIENGQLECPQGYKRLNLSHCQDINEC  
 LTLGLCKDSECVNTRGSYLCTCRPGLMLDPSRRCVSDKAVSMQQGLCYRSLGSGTCTLPLVHRITKQIC  
 CCSRVGKAWGSTCEQCPLPGTEAFREICPAGHGYTSSSDIRLSMRKAEELASPLREQTEQSTAPPPG  
 QAERQPLRAATATWIEAETLPDKGDSRAVQITTSAPHLPARVPGDATGRPAPSLPGQGIPESPAEEQVIP  
 SSDVLVTHSPDFDPCFAGASNICGPGTCVSLPNGYRCVCSPGYQLHPSQDYCTDIDECEQPGVCSGGRC  
 SNTEGSYHCECDRGYIMVRKGHCQDINECRHPGTCPDGRVCNSPGSYTCLACEEGYVQSGSCVDVNECL  
 TPGICTHGRCINMEGSFRCSCEPGYEVTDPDKKGRDVEDCASRASCPTGLCLNTEGSFTCSACQSGYWVN  
 EDGTACEDLDECAFPGVCPTGVCTNTVGSFCKDCDRGYRPNPLGNRCEDVDECEGPQSSCRGGECKNTE  
 GSYQCLCHQGFQLVNGTMCEDVNECVGEEHCAPHGECLNSLGSFFCLCAPGFASAEGGTRCQDVDECAAT  
 DPCPGGHCVNTEGSFSLCETGFPSPDSGECLDIDECEDREDPVCGAWRCENSPGSYRCILDQCPGFYV  
 APNGDCIDIDECANDTVCGNHGFCDNTDGSFRCLCDQGFETSPSGWECVDVNECELMMAVCGDALCENVE  
 GSFLCLCASDLEEYDAEEGHCRPRVAGAQRIVEPRTDQAPSLIRMECYSEHNGGPPCSQILGQNSTQAE  
 CCCTQGARWKGACAPCPSEDSVEFSQLCPSGQGYIPVEGAWTFGQTMYPDADCEVLFGPALCQNGRCLNI  
 VPGYICLNPYHYDASSRKCQDHNECQDLACENGEVNTGEGSFHCLCNPLTLDLGSRQRCVNSTSTED  
 FPDHDIHMDICWKKVTNDVCSQPLRGHHTTYTECCQDGEAWSQQCALCPPRSSEVYAQLCNVARIEAER  
 GAGIHFPRGYEYGPGLDDLLENLYGPDGAPFYNYLGPEDTAPEPPFSNPASQPGDNTPVLEPPLQPSLEQ  
 PHYLASHSEPLASFEGQLAECEGILNGCENGRVREGYTCDCFEFGQLDAAHMACVDVNECEDLNGPA  
 ALCAHGHCENTEGSYRCHCSPGYVAEPGPPHCAAKE

**TRTRPLEQKLISEEDLAANDILDYKDDDDKV**

**Tag:** C-MYC/DDK  
**Predicted MW:** 192.8 kDa  
**Concentration:** >0.05 µg/µL as determined by Bradford protein assay method.  
**Purity:** > 80% as determined by SDS-PAGE and Coomassie blue staining  
**Buffer:** 50mM Tris.HCl, pH7.5, 100mM glycine, 10% glycerol.  
**Storage:** Store at -80°C after receiving vials.  
**Stability:** Stable for 12 months from the date of receipt of the product under proper storage and handling conditions. Avoid repeated freeze-thaw cycles.  
**RefSeq:** [NP\\_038617.3](#)

Locus ID:	16997
UniProt ID:	<a href="#">O08999</a> , <a href="#">Q0VD84</a>
RefSeq Size:	6620
Cytogenetics:	12 D1
RefSeq ORF:	5361
Synonyms:	AW208642
Summary:	May play an integral structural role in elastic-fiber architectural organization and/or assembly. [UniProtKB/Swiss-Prot Function]

### Product images:



Coomassie blue staining of purified Ltbp2 protein (Cat #TP515650). The protein was produced from mammalian cells transfected with Ltbp2 cDNA clone (Cat #[MR215650]).