

## Product datasheet for TP511405

### Atp2a1 (NM\_007504) Mouse Recombinant Protein

#### Product data:

|                                       |  |
|---------------------------------------|--|
| Product Type:                         | Recombinant Proteins   |
| Description:                          | Purified recombinant protein of Mouse ATPase, Ca <sup>++</sup> transporting, cardiac muscle, fast twitch 1 (Atp2a1), with C-terminal MYC/DDK tag, expressed in HEK293T cells, 20ug |
| Species:                              | Mouse  |
| Expression Host:                      | HEK293T  |
| Expression cDNA Clone or AA Sequence: | >MR211405 protein sequence<br>Red=Cloning site Green=Tags(s)   |

MEAAHSKSTEECLSYFGVSETTGLTPDQVKRHLEKYGNELPAEEGKSLWELVEQFEDLLVRILLAAAC  
ISFVLAWFEEGEETVTA FVEPFVILLILIANAIVGVWQERNAENAIEALKEYEPENGKVYRDRKSVQRI  
KARDIVPGDIVEVAVGDKVPADIRILSIKSTTLRVDQSILTGESVSVIKHTDPVDPRAVNQDKNMLFS  
GTNIAAGKAVGIVATTGVSTEIGKIRDQMAATEQDKTPLQQLDEFGEQLSKVISLICVAVWLINIGHFN  
DPVHGGSWFRGAIYYFKIAVALAVAAIPEGLPAVITCLALGTRRMAKKNAIVRSLPSVETLGCTSVICS  
DKTGTLTNNQMSVCKMFIIDKVDGDVCSLNEFSITGSTYAPEGEVLKNDKPVRAGQYDGLVELATICALC  
NDSSLDFNETKGVYEKVGATETALTTLVEKMNVFNTEVRSLSKVERANACNSVIRQLMKKEFTLEFSRD  
RKSMSVYCSPAKSSRAAVGNKMFVKGAPEGVDRCNVVRVGTTRVPLTGPVKEKIMSVIKEWGTGRDTLR  
CLALATRDTPPKREEMVLDDSAKFMHEYEMDLTFVGVGMLDPPRKEVTGSIQLCRDAGIRVIMITGDNKG  
TAIAICRRIGIFSENEEVTDRAYTGREFDDLPLAEQREACRRACCFARVEPSHKSKIVEYLSYDEITAM  
TGDGVNDAPALKKAEIGIAMGSGTAVAKTASEMVLADDNFSTIVA AVEEGRAIYNNMKQFIRYLISNVG  
EVCIFLTAALGLPEALIPVQLLWVNLVTDGLPATALGFNPPDLDIMDRPPRSPKEPLISGWLFFRYMAI  
GGYVGAATVGAAAWWFLYAEDGPHVSYHQLTHFMQCTEHNPEFDGLDCEVFEAPEPMTMALSVLVTIEMC  
NALNSLSENQSLLRMPWVNIWLLGSICLSMSLHFLILYVDPLPMIFKLRALDFTQWLMVCLKISLPVIGL  
DELLKFIARNYLEG

TRTRPLEQKLISEEDLAANDILDYKDDDDKV

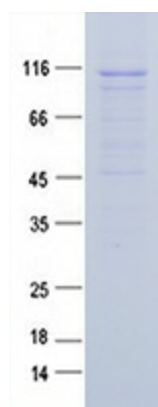
|                |   |
|----------------|---|
| Tag:           | C-MYC/DDK   |
| Predicted MW:  | 109.4 kDa   |
| Concentration: | >0.05 µg/µL as determined by microplate BCA method          |
| Purity:        | > 80% as determined by SDS-PAGE and Coomassie blue staining |
| Buffer:        | 25 mM Tris-HCl, 100 mM glycine, pH 7.3, 10% glycerol        |



[View online »](#)

|                      |  |
|----------------------|--|
| <b>Note:</b>         | For testing in cell culture applications, please filter before use. Note that you may experience some loss of protein during the filtration process.   |
| <b>Storage:</b>      | Store at -80°C after receiving vials.  |
| <b>Stability:</b>    | Stable for 12 months from the date of receipt of the product under proper storage and handling conditions. Avoid repeated freeze-thaw cycles.  |
| <b>RefSeq:</b>       | <u>NP_031530</u>   |
| <b>Locus ID:</b>     | 11937  |
| <b>UniProt ID:</b>   | <u>Q8R429</u>  |
| <b>RefSeq Size:</b>  | 3486   |
| <b>Cytogenetics:</b> | 7 69.04 cM   |
| <b>RefSeq ORF:</b>   | 2985   |
| <b>Synonyms:</b>     | SERCA1   |
| <b>Summary:</b>      | Key regulator of striated muscle performance by acting as the major Ca(2+) ATPase responsible for the reuptake of cytosolic Ca(2+) into the sarcoplasmic reticulum (PubMed:21697544, PubMed:22961106, PubMed:25640239, PubMed:26816378). Catalyzes the hydrolysis of ATP coupled with the translocation of calcium from the cytosol to the sarcoplasmic reticulum lumen. Contributes to calcium sequestration involved in muscular excitation/contraction (PubMed:21697544, PubMed:22961106, PubMed:25640239, PubMed:26816378).<br>[UniProtKB/Swiss-Prot Function] |

### Product images:



Purified recombinant protein Atp2a1 was analyzed by SDS-PAGE gel and Coomassie Blue Staining.