

Product datasheet for TP509735

Glb1 (NM_009752) Mouse Recombinant Protein

Product data:

Product Type:	Recombinant Proteins
Description:	Purified recombinant protein of Mouse galactosidase, beta 1 (Glb1), with C-terminal MYC/DDK tag, expressed in HEK293T cells, 20ug
Species:	Mouse
Expression Host:	HEK293T
Expression cDNA Clone or AA Sequence:	>MR209735 protein sequence Red =Cloning site Green =Tags(s)

MLRVPLCTPLPLLALLQLLGAAHGIYNVTQRFTKLDYSRDRFLKDGQPFRYISGSIHYFRIPRFYWEDRL
LKMKMAGLNAIQMYVPWNFHEPQPGQYEFSGDRDVEHFIQLAHELGLLVILRPGPYICA EWDMGGLPAWL
LEKQSIVLRSSDPDYLVAVDKWLAVLLPKMKPLLYQNGGPIITVQVENEYGSYFACDYDLRFLVHRFRY
HLGNDVILFTTDGASEKMLKCGTLQDLYATVDFGTGNITQAFVQRKFEPKGPLINSEFYTGWLDHWGK
PHSTVKTTLATSLYNLLARGANVNLYMFIGGTNFAYWNGANTPYEPQPTS YDYDAPLSEAGDLTKKYFA
LREVIQMFKEVPEGPIPPSTPKFAYGKVALRKFKTVAEALGILCPNGPVKSLYPLTFTQVKQYFGYVLYR
TTLPQDCSNPKPIFSSPFNGVRDRAYVSVDGVPQGILDRNLMTALNIQGKAGATLDILVENMGRVNYGRF
INDFKGLISNMTINSTVLTNWTVFPLDTEAMVRNHLWGREASDGGHLDGRSTSNSSDLILPTFVYVGNFSI
PSGIPDLPQDFTIQFPGWSKGQVWINGFNLGRYWPTMGPKTLFVPRNILTTSAPNNITVLELEFAPCSE
GTPELCTVEFVDTPVIS

TRTRPLEQKLISEEDLAANDILDYKDDDDKV

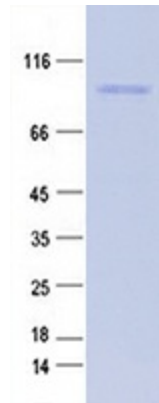
Tag:	C-MYC/DDK
Predicted MW:	73 kDa
Concentration:	>0.05 µg/µL as determined by microplate BCA method
Purity:	> 80% as determined by SDS-PAGE and Coomassie blue staining
Buffer:	25 mM Tris-HCl, 100 mM glycine, pH 7.3, 10% glycerol
Note:	For testing in cell culture applications, please filter before use. Note that you may experience some loss of protein during the filtration process.
Storage:	Store at -80°C after receiving vials.
Stability:	Stable for 12 months from the date of receipt of the product under proper storage and handling conditions. Avoid repeated freeze-thaw cycles.



[View online »](#)

RefSeq:	NP_033882
Locus ID:	12091
UniProt ID:	P23780 , Q3TAW7
RefSeq Size:	2396
Cytogenetics:	9 64.4 cM
RefSeq ORF:	1944
Synonyms:	AW125515; Bg; Bge; Bgl; Bgl-; Bgl-e; Bgl-s; Bgl-t; Bgs; Bgt; C130097A14Rik
Summary:	This gene encodes a preproprotein that is proteolytically cleaved to yield a signal peptide and a proprotein that is subsequently processed to generate the active mature peptide. The encoded protein is a lysosomal enzyme that catalyzes the hydrolysis of terminal beta-D-galactose residues in various substrates like lactose, ganglioside GM1 and other glycoproteins. Mutations in the human gene are associated with GM1-gangliosidosis and Morquio B syndrome. Disruption of the mouse gene mirrors the symptoms of human gangliosidosis. Alternative splicing results in multiple transcript variants. [provided by RefSeq, Dec 2013]

Product images:



Purified recombinant protein Glb1 was analyzed by SDS-PAGE gel and Coomassie Blue Staining.