

## Product datasheet for TP508202

### Slc2a4 (NM\_009204) Mouse Recombinant Protein

#### Product data:

|                                       |   |
|---------------------------------------|---|
| Product Type:                         | Recombinant Proteins  |
| Description:                          | Purified recombinant protein of Mouse solute carrier family 2 (facilitated glucose transporter), member 4 (Slc2a4), with C-terminal MYC/DDK tag, expressed in HEK293T cells, 20ug |
| Species:                              | Mouse   |
| Expression Host:                      | HEK293T   |
| Expression cDNA Clone or AA Sequence: | >MR208202 representing NM_009204<br>Red=Cloning site Green=Tags(s)  |

MPSGFQQIGSDDGEPQRVTGTLVLAVFSAVLGSLQFGYNIGVINAPQKVIEQSYNATWLGRQGGPD  
SIPQGTLLTTLWALSVAIFSVGGMISSFLIGIISQWLGRKRAMLANNVLAVLGGALMGLANAAASYEILIL  
GRFLIGAYSGLTSLVPMYVGEIAPTHLRGALGTNLQLAIVIGILVAQVLGLESMLGTATLWPLLLALT  
LPALLQLILLPFCPESPRYLIIIRNLEGPARKSLKRLTGWADVSDALAELKDEKRKLKERPMSLLQLLG  
SRTHRQPLIIAVVLQLSQQLSGINAVFYSTSI FESAGVGPAYATIGAGVWNTVFTLVSVLLVERAGRR  
TLHLLGLAGMCGCAILMTVALLLLERVPAMSYSIVAIFGFVAFFEIGPGPIPWFIWAELFSQGPRPAAM  
AVAGFSNWT CNFIVGMGFQYVADAMGPYVFLLFVLLLGFIFTFLKVPETRGRTFDQISAAFRRTPSLL  
EQEVPKSTELEYLGPDEND

TRTRPLEQKLISEEDLAANDILDYKDDDDKV

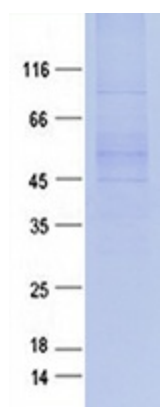
|                |  |
|----------------|--|
| Tag:           | C-MYC/DDK  |
| Predicted MW:  | 55.2 kDa   |
| Concentration: | >0.05 µg/µL as determined by microplate BCA method   |
| Purity:        | > 80% as determined by SDS-PAGE and Coomassie blue staining  |
| Buffer:        | 25 mM Tris-HCl, 100 mM glycine, pH 7.3, 10% glycerol   |
| Note:          | For testing in cell culture applications, please filter before use. Note that you may experience some loss of protein during the filtration process. |
| Storage:       | Store at -80°C after receiving vials.  |
| Stability:     | Stable for 12 months from the date of receipt of the product under proper storage and handling conditions. Avoid repeated freeze-thaw cycles.        |
| RefSeq:        | <a href="#">NP_033230</a>  |



[View online »](#)

|               |   |
|---------------|---|
| Locus ID:     | 20528   |
| UniProt ID:   | <a href="#">P14142</a>  |
| RefSeq Size:  | 2822  |
| Cytogenetics: | 11 42.93 cM   |
| RefSeq ORF:   | 1527  |
| Synonyms:     | Glut-4; Glut4; GT2; twgy  |
| Summary:      | Insulin-regulated facilitative glucose transporter, which plays a key role in removal of glucose from circulation (PubMed:26240143, PubMed:26629404). Response to insulin is regulated by its intracellular localization: in the absence of insulin, it is efficiently retained intracellularly within storage compartments in muscle and fat cells (PubMed:26240143, PubMed:26629404). Upon insulin stimulation, translocates from these compartments to the cell surface where it transports glucose from the extracellular milieu into the cell (PubMed:26240143, PubMed:26629404).[UniProtKB/Swiss-Prot Function] |

### Product images:



Purified recombinant protein Slc2a4 was analyzed by SDS-PAGE gel and Coomassie Blue Staining.