

## Product datasheet for **TP507133**

### Tubb6 (NM\_026473) Mouse Recombinant Protein

#### Product data:

Product Type:	Recombinant Proteins
Description:	Purified recombinant protein of Mouse tubulin, beta 6 class V (Tubb6), with C-terminal MYC/DDK tag, expressed in HEK293T cells, 20ug
Species:	Mouse
Expression Host:	HEK293T
Expression cDNA	>MR207133 protein sequence
Clone or AA Sequence:	Red=Cloning site Green=Tags(s)

MREIVHIQAGQCNGNIGTKFWEVISDEHGIDQAGGYVGDSALQLERISVYNESSKKYVPRALVDLEP  
GTMDSVRSRSGPFGQLFRPDNFIFGQTGAGNNWAKGHYTEGAELVDSVLDVVRKECEHCDCLQGFQLTHSLG  
GGTGSGMGTLLISKIREEYPDRIMNTFSVMPSPKVSQDTPVEPNATLSVHQLVENTDETYCIDNEALYDI  
CFRTLKLTPTPYGDLNHLVSATMSGVTTSLRFPGQLNADLRKLVANMVPFRLHFFMPGFAPLTARGSQQ  
YRALTVPCLTQQMFDKNNMMAACDPRHGRLTVATVFRGPMMSMKEVDEQMLAIQKNSSYFVEWIPNNVK  
VAVCDIPRGLKMASTFIGNSTAIQELFKRISEQFSAMFRRKAFLHWFTGEGMDEMEFTEAESNMNDLVS  
EYQQYQDATVNDGEEAFEDDEEEINE

TRTRPLEQKLISEEDLAANDILDYKDDDDKV

Tag:	C-MYC/DDK
Predicted MW:	50.1 kDa
Concentration:	>0.05 µg/µL as determined by microplate BCA method
Purity:	> 80% as determined by SDS-PAGE and Coomassie blue staining
Buffer:	25 mM Tris-HCl, 100 mM glycine, pH 7.3, 10% glycerol
Note:	For testing in cell culture applications, please filter before use. Note that you may experience some loss of protein during the filtration process.
Storage:	Store at -80°C after receiving vials.
Stability:	Stable for 12 months from the date of receipt of the product under proper storage and handling conditions. Avoid repeated freeze-thaw cycles.
RefSeq:	<a href="#">NP_080749</a>
Locus ID:	67951



[View online »](#)

UniProt ID: [Q922F4](#), [Q3UMM1](#)

RefSeq Size: 1807

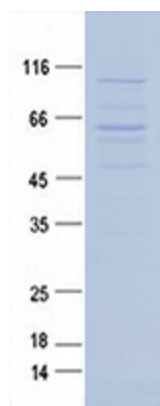
Cytogenetics: 18 E1

RefSeq ORF: 1344

Synonyms: 2310057H16Rik; BB220206

Summary: Tubulin is the major constituent of microtubules. It binds two moles of GTP, one at an exchangeable site on the beta chain and one at a non-exchangeable site on the alpha chain. [UniProtKB/Swiss-Prot Function]

### Product images:



Purified recombinant protein Tubb6 was analyzed by SDS-PAGE gel and Coomassie Blue Staining.