

Product datasheet for **TP506975**

Rgma (BC023870) Mouse Recombinant Protein

Product data:

Product Type: Recombinant Proteins

Description: Purified recombinant protein of Mouse RGM domain family, member A (cDNA clone MGC:38550 IMAGE:5353958), complete cds, with C-terminal MYC/DDK tag, expressed in HEK293T cells, 20ug

Species: Mouse

Expression Host: HEK293T

Expression cDNA Clone or AA Sequence: >MR206975 protein sequence
Red=Cloning site **Green**=Tags(s)

MGMGRGAGRSALGLWPTLAFLLCSFPAAISPCKILKCNSEFWSATSSGSHAPASDDVPEFCAALRTYALC
TRRTARTCRGDLAYHSAVHGIEDLMSQHNCSKDGPTSQPRVRTLPPAGDSQERSDSPEICHYEKSFHKHS
AAPNYTHCGLFGDPHLRTFTDFHQTCKVQGAWPLIDNNYLNQVTNTPVLPGSAATATSKLTIIFKNFQE
CVDQKVYQAEMDELPSAFADGSKNGGDKHGANSKITEKVSQHVIEQAKYIGTTIVRQVGRYLTFAVR
MPEEVVNAVEDRDSQGLYLCLRGCP LNQQIDFQAFRANAESPRRPAASPSVPVETFPYETAVAKCKEK
LPVEDLYQACVFDLLTTGDVNFTLAAYYAL EDGKMLHSNKDKLHLFERTRELPGAVAAAAAATTFPLAP
QILLGTIPLLVLPLW

TRTRPLEQKLISEEDLAANDILDYKDDDDKV

Tag: C-MYC/DDK

Predicted MW: 47.8 kDa

Concentration: >0.05 µg/µL as determined by microplate BCA method

Purity: > 80% as determined by SDS-PAGE and Coomassie blue staining

Buffer: 25 mM Tris-HCl, 100 mM glycine, pH 7.3, 10% glycerol

Note: For testing in cell culture applications, please filter before use. Note that you may experience some loss of protein during the filtration process.

Storage: Store at -80°C after receiving vials.

Stability: Stable for 12 months from the date of receipt of the product under proper storage and handling conditions. Avoid repeated freeze-thaw cycles.

Locus ID: 244058



[View online »](#)

UniProt ID: [Q6PCX7](#)

RefSeq Size: 3384

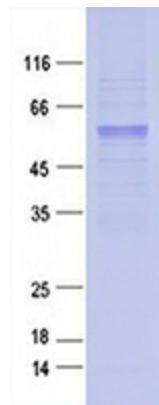
Cytogenetics: 7 D1

RefSeq ORF: 1311

Synonyms: C230063O06, MGC38550, MGC69915

Summary: Member of the repulsive guidance molecule (RGM) family that performs several functions in the developing and adult nervous system. Regulates cephalic neural tube closure, inhibits neurite outgrowth and cortical neuron branching, and the formation of mature synapses. Binding to its receptor NEO1/neogenin induces activation of RHOA-ROCK1/Rho-kinase signaling pathway through UNC5B-ARHGEF12/LARG-PTK2/FAK1 cascade, leading to collapse of the neuronal growth cone and neurite outgrowth inhibition. Furthermore, RGMA binding to NEO1/neogenin leads to HRAS inactivation by influencing HRAS-PTK2/FAK1-AKT1 pathway. It also functions as a bone morphogenetic protein (BMP) coreceptor that may signal through SMAD1, SMAD5, and SMAD8.[UniProtKB/Swiss-Prot Function]

Product images:



Purified recombinant protein Rgma was analyzed by SDS-PAGE gel and Coomassie Blue Staining.